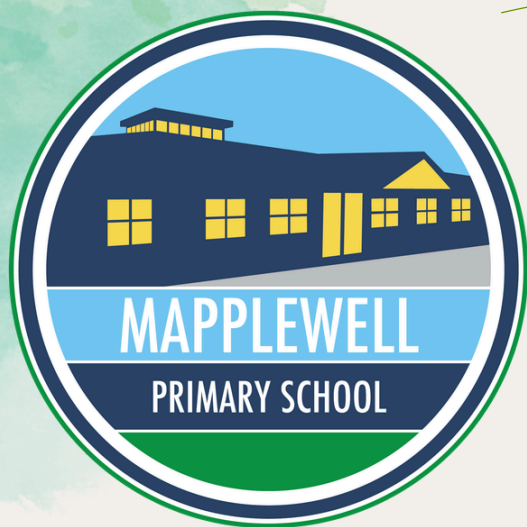


# Weekly Bulletin



W/E 05/06/2026

SUMMER 2



## SCHOOL ATTENDANCE

Class 1 95%  
Class 2 94%  
Class 3 94%  
Class 4 95%  
Class 5 94%  
Class 6 96%  
Class 7 97%  
Class 8 96%  
Class 9 89%  
Class 10 95%  
Class 11 93%



**WHOLE SCHOOL: 94%**



## Book Fair

We're pleased to inform you that the Book Fair will be returning w/c **Monday 8<sup>th</sup> June**. All pupils will be able to browse the book fair on certain days after school from **3:15pm to 4pm**

**Rec & KS1 on 8<sup>th</sup> June**  
**LKS2 on 9<sup>th</sup> June**  
**UKS2 on 11<sup>th</sup> June**

It will be cash free, parents can scan the QR codes displayed at the book fair to pay for their books.





## KS2 – Music Festival

*'A festival to showcase the talents of children ages 7-11 who have been having music lessons at school as part of a whole class.'*

**Tuesday 23<sup>rd</sup> June 2026**  
**1:30pm**  
**The Metrodome Arena**

Audience admission **£5**  
payable on the door.



## Magna Trip – Year 5&6

Children in **Year 5 and 6** have the exciting opportunity to visit Magna on  
**23<sup>rd</sup> June - Year 5**  
**and**  
**24<sup>th</sup> June - Year 6**  
Booking is now available on Arbor



## Summer Fair

Our Summer Fair will be held on **Friday 3<sup>rd</sup> July**.

This will be held on the field from **3:30 – 5pm**

We're looking for any donations for the upcoming Summer Fair – cakes, raffle prizes, toys, books, or anything suitable would be hugely appreciated.



Thank you for your continued support!



2



## AFTER SCHOOL CLUBS:

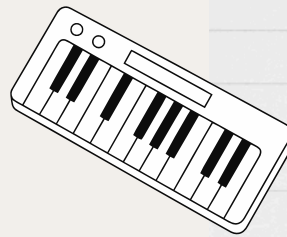
Clubs for next term Summer 2 start **W/C 01/06/2026**, the last club will be **Thursday 16<sup>th</sup> July 2026**.

## COMMUNICATION

Please could you move your most recent email from the junk mail box to your inbox

### Monday

- Quiz Club - Y3 - Y6 - C7
- Reception and KS1 Choir - C1
- Book Club - KS1 + KS2 -C9
- Lunchtime Keyboard Club - KS2



### ✔ Quiz

### Tuesday

- Dodgeball Club - KS1



### Wednesday

- Grassroots Outdoor Multi-skills - Year KS1 and KS2
- Lunchtime Choir Club - KS2

### Thursday

- Crochet Club - KS2 - C6
- Craft Club - Rec
- Lunchtime Guitar Club -Year 5 and 6 - C12



### Our Values

- Kind
- Resilient
- Independent
- Respectful
- Honest
- Safe
- Happy
- Teamwork



# SPRING/SUMMER 2026 MENU

# WEEK 1 MAPPLEWELL PRIMARY SCHOOL

	MONDAY	TUESDAY	WEDNESDAY	THURSDAY	FRIDAY
<b>HOT DISHES</b>	<b>OPTION 1</b> Cheese and Tomato Pizza with Potato Wedges 	<b>OPTION 1</b> All Day Breakfast 	<b>OPTION 1</b> Roast Chicken with Sage & Onion Stuffing, Potatoes and Gravy 	<b>OPTION 1</b> Chicken Korma with Wholegrain Rice 	<b>OPTION 1</b> Fish Fingers with Chips
	<b>OPTION 2</b> Red Pesto Spaghetti 	<b>OPTION 2</b> Sweet Potato & Vegetable Curry with Wholegrain Rice 	<b>OPTION 2</b> Quorn Roast with Sage & Onion Stuffing, Potatoes and Gravy 	<b>OPTION 2</b> Cheese & Baked Bean Turnover with Potato Wedges 	<b>OPTION 2</b> Quorn Dippers with Chips 
	<b>OPTION 3</b> Jacket Potato with a Choice of Fillings 	<b>OPTION 3</b> Jacket Potato with a Choice of Fillings 	<b>OPTION 3</b> Jacket Potato with a Choice of Fillings 	<b>OPTION 3</b> Jacket Potato with a Choice of Fillings 	<b>OPTION 3</b> Jacket Potato with a Choice of Fillings 
	<b>ALL DISHES ARE SERVED WITH CRUNCHY VEGETABLES AND / OR FRESH SALAD</b>				
<b>VEG</b>	Sweetcorn Salad Bar 	Garden Peas Big Bowl Salad 	Broccoli Carrots 	Mixed Salad Sweetcorn 	Garden Peas Baked Beans 
<b>DESSERT</b>	Watermelon 	Berry Blondie	Lemon Cookie with Fruit 	Chocolate Crunch	Ice Cream



## AVAILABLE DAILY

Fresh Fruit, Freshly Baked Bread, Yoghurt and Water



Vegetarian



Wholegrain



Nutritionist's Choice



Oily Fish



Fruity



Vegan





# MAPPLEWELL HOUSE POINTS



Pupils work as a team in their house  
to earn the most Mapplewell points  
The house with the most points  
by the end of the term  
will earn a reward as a house  
Below is points so far this term....

Cannon Hall House: **2238pts**

Locke Park House: **2205pts**

Metrodome House: **2047pts**

Oakwell House: **2160pts**





# Key Dates

## June 2026

**W/c 8<sup>th</sup> June**

Phonics Screening

**Monday 8<sup>th</sup> June**

Book fair in school

**Tuesday 16<sup>th</sup> June - Wednesday 17<sup>th</sup> June**

Trip to PGL Residential - Year 4

**Thursday 18<sup>th</sup> June**

Nursery AM Sports Day - 11:00 am - 11:30 am  
Nursery PM Sports Day - 14:30 pm - 15:00 pm

**Monday 22<sup>nd</sup> June**

Compass B Anxiety Workshop - 4.00 pm

**Tuesday 23<sup>rd</sup> June**

Trip to Magna - Year 5 and 6

**Tuesday 23<sup>rd</sup> June**

KS2 Music Festival Brass - Year 4

**Wednesday 24<sup>th</sup> June**

Trip to Magna - Year 6

**Thursday 25<sup>th</sup> June**

KS2 Sports Day - Dorothy Hyman

**Friday 26<sup>th</sup> June**

KS1 Sports Day - School field

**Tuesday 30<sup>th</sup> June**

EYFS Trip to Sundown Adventureland  
Class 1 and Class 2

## July 2026

**Friday 3<sup>rd</sup> July**

Summer Fair

**Friday 10<sup>th</sup> July**

Year 6 leavers trip to Soar Trampoline Park



## Inset Days

2025/2026

Friday 19<sup>th</sup> June  
Monday 20<sup>th</sup> July

## Inset Days

2026/27

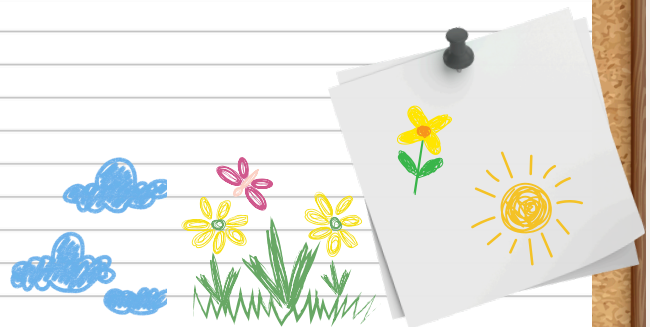
Tuesday 1<sup>st</sup> Sept  
Thursday 22<sup>nd</sup> October  
Friday 23<sup>rd</sup> October  
Friday 18<sup>th</sup> December  
Friday 12<sup>th</sup> February  
Monday 22<sup>nd</sup> February  
Friday 25<sup>th</sup> June

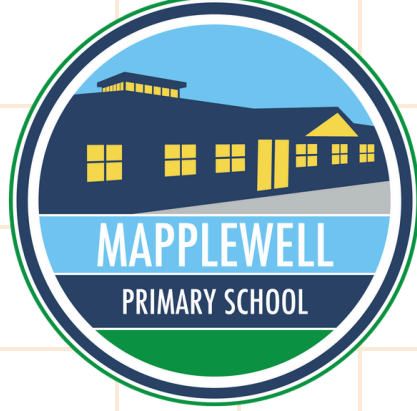
## SCHOOL HOLIDAYS

2025/2026

## SCHOOL HOLIDAYS

MON 25<sup>TH</sup> MAY- FRI 29<sup>TH</sup> MAY  
TUES 21<sup>ST</sup> JULY- MON 31<sup>ST</sup> AUG





# SPORTS DAY DATES

## NURSERY SPORTS DAY

Thursday 18<sup>th</sup> June  
AM - 11-11:30AM  
PM - 2:30-3PM

## KS2 SPORTS DAY

Thursday 25<sup>th</sup> June @ Dorothy Hyman  
9:45am - 12:30pm

## KS1 SPORTS DAY

Friday 26<sup>th</sup> June on School Field  
1pm - 3:15pm

## REC SPORTS DAY

Thursday 2<sup>nd</sup> July on School Field  
2pm





# NURSERY DOUGH DISCO SHOW

TUESDAY 23<sup>RD</sup> JUNE 2026

MORNING: 11:10

AFTERNOON: 3:00



# ANXIETY WORKSHOP

## FOR PARENTS/CARERS



Would you like some practical tips to support your child experiencing anxiety?



Do you want to understand anxiety for yourself or for your young person?

**Monday**  
**22<sup>nd</sup> June**  
**4pm - 6pm**

**Mapplewell**  
**Primary**  
**School**

**Please get in touch with school to book your place**

