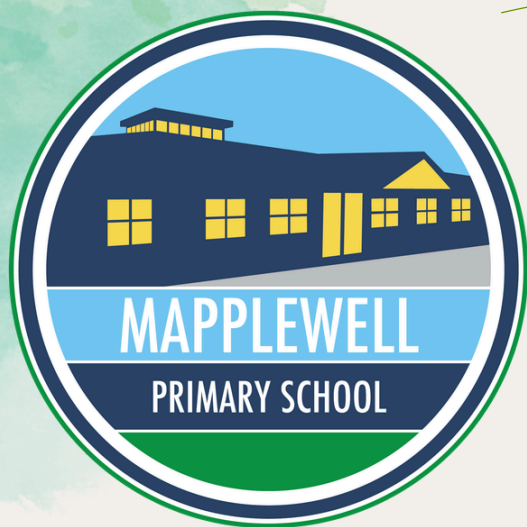


# Weekly Bulletin



W/E 08/05/2026

SUMMER 1



## Year 6 SATs Week Breakfast Club

We are offering a free Breakfast Club for all Year 6 Pupils to attend and preparation for SATs week (Monday to Thursday)  
**11<sup>th</sup> to 14<sup>th</sup> May**  
start time **8.00 am.**



### SCHOOL ATTENDANCE

Class 1 95%  
Class 2 100%  
Class 3 93%  
Class 4 97%  
Class 5 95%  
Class 6 91%  
Class 7 98%  
Class 8 90%  
Class 9 94%  
Class 10 91%  
Class 11 99%

**WHOLE SCHOOL: 94%**



1





## KS2 – Music Festival

*‘A festival to showcase the talents of children ages 7-11 who have been having music lessons at school as part of a whole class.’*

**Tuesday 23<sup>rd</sup> June 2026**  
**1:30pm**  
**The Metrodome Arena**

Audience admission **£5**  
payable on the door.



## Magna Trip – Year 5&6

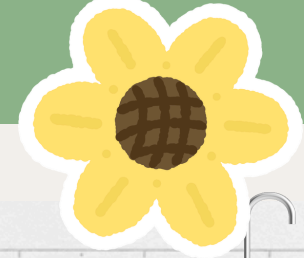
Children in **Year 5 and 6** have the exciting opportunity to visit Magna on  
**23<sup>rd</sup> June – Year 5**  
**and**  
**24<sup>th</sup> June – Year 6**  
Booking is now available on Arbor



## Walk to School Week

Walk to School Week 2026 takes place from **Monday 18 May to Friday 22 May**, encouraging children to walk, wheel, cycle, or scoot to school while promoting health, safety, and environmental awareness.





## AFTER SCHOOL CLUBS:

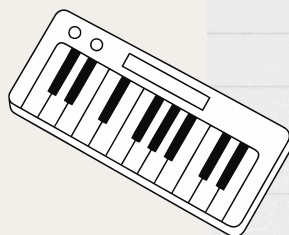
Clubs for next term Summer 1 start W/C 13/04/2026, the last club will be Thursday 21<sup>st</sup> May 2026.

## COMMUNICATION

Please could you move your most recent email from the junk mail box to your inbox

### Monday

- Cooking Club - Yr 3/4/5/6 - C3
- Quiz Club - Y3 - Y6 - C7
- Board Games Club - Y1 - Y6- C9
- Lunchtime Keyboard Club - KS2
- Reception and KS1 Choir - C1



### Quiz

### Tuesday

- Art Club - KS1 - C4
- Creative Club - KS1
- SATS Boosters - Year 6- C10/C11



### Wednesday

- Grassroots Dance Year KS1 and KS2 - Hall
- Lunchtime Choir Club - KS2

### Thursday

- Lunchtime Guitar Club -Year 5 and 6 - C12
- Crochet Club - KS2 - C6



### Our Values

- Kind
- Resilient
- Independent
- Respectful
- Honest
- Safe
- Happy
- Teamwork



# SPRING / SUMMER 2026 MENU

# WEEK 1 MAPPLEWELL PRIMARY SCHOOL

	MONDAY	TUESDAY	WEDNESDAY	THURSDAY	FRIDAY
<b>HOT DISHES</b>	<b>OPTION 1</b> Cheese and Tomato Pizza with Potato Wedges 	<b>OPTION 1</b> All Day Breakfast 	<b>OPTION 1</b> Roast Chicken with Sage & Onion Stuffing, Potatoes and Gravy 	<b>OPTION 1</b> Chicken Korma with Wholegrain Rice 	<b>OPTION 1</b> Fish Fingers with Chips
<b>OPTION 2</b>	Red Pesto Spaghetti 	Sweet Potato & Vegetable Curry with Wholegrain Rice 	Quorn Roast with Sage & Onion Stuffing, Potatoes and Gravy 	Cheese & Baked Bean Turnover with Potato Wedges 	Quorn Dippers with Chips 
<b>OPTION 3</b>	Jacket Potato with a Choice of Fillings 	Jacket Potato with a Choice of Fillings 	Jacket Potato with a Choice of Fillings 	Jacket Potato with a Choice of Fillings 	Jacket Potato with a Choice of Fillings 
<b>ALL DISHES ARE SERVED WITH CRUNCHY VEGETABLES AND / OR FRESH SALAD</b>					
<b>VEG</b>	Sweetcorn Salad Bar 	Garden Peas Big Bowl Salad 	Broccoli Carrots 	Mixed Salad Sweetcorn 	Garden Peas Baked Beans 
<b>DESSERT</b>	Watermelon 	Berry Blondie	Lemon Cookie with Fruit 	Chocolate Crunch	Ice Cream



## AVAILABLE DAILY

Fresh Fruit, Freshly Baked Bread, Yoghurt and Water



Vegetarian



Wholegrain



Nutritionist's Choice



Oily Fish



Fruity



Vegan

Our menu is subject to change. Please be assured that all notified medical diets and allergy requirements will be safely catered for.



Chartwells  
Schools



# MAPPLEWELL HOUSE POINTS



Pupils work as a team in their house  
to earn the most Mapplewell points  
The house with the most points  
by the end of the term  
will earn a reward as a house  
Below is points so far this term....

Cannon Hall House: **1201pts**

Locke Park House: **1207pts**

Metrodome House: **1107pts**

Oakwell House: **1150pts**





## Inset Days

2025/2026

Friday 19<sup>th</sup> June

Monday 20<sup>th</sup> July

# Key Dates

## May 2026

### Monday 11<sup>th</sup> - 15<sup>th</sup> May

KS2 SATs week - Breakfast Club offered to Y6

### W/C 18<sup>th</sup> May

KS1 SATs week

## June 2026

### W/c 8<sup>th</sup> June

Phonics Screening

### Monday 8<sup>th</sup> June

Book fair in school

### Tuesday 16<sup>th</sup> June - Wednesday 17<sup>th</sup> June

Trip to PGL Residential - Year 4

### Thursday 18<sup>th</sup> June

Nursery AM Sports Day - 11:00 am - 11:30 am

Nursery PM Sports Day - 14:30 pm - 15:00 pm

### Tuesday 23<sup>rd</sup> June

Trip to Magna - Year 5

### Tuesday 23<sup>rd</sup> June

KS2 Music Festival Brass - Year 4

### Wednesday 24<sup>th</sup> June

Trip to Magna - Year 6

### Thursday 25<sup>th</sup> June

KS2 Sports Day - Dorothy Hyman

### Friday 26<sup>th</sup> June

KS1 Sports Day - School field

### Tuesday 30<sup>th</sup> June

EYFS Trip to Sundown Adventureland

Class 1 and Class 2

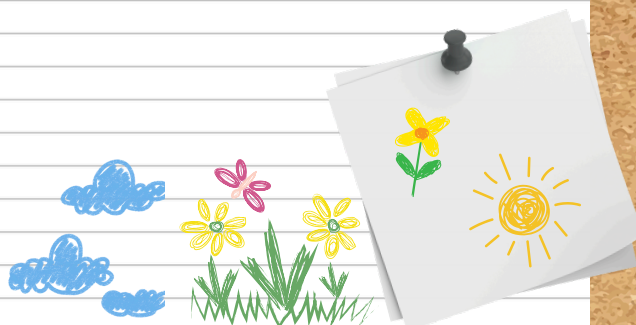
## SCHOOL HOLIDAYS

2025/2026

## SCHOOL HOLIDAYS

MON 25<sup>TH</sup> MAY- FRI 29<sup>TH</sup> MAY

TUES 21<sup>ST</sup> JULY- MON 31<sup>ST</sup> AUG



Wednesday 20th May 2026

# WORLD BEE DAY



## MAINS

Hot Honey Chicken Bites, Hot  
Honey Quorn Bites (V)

## SIDES

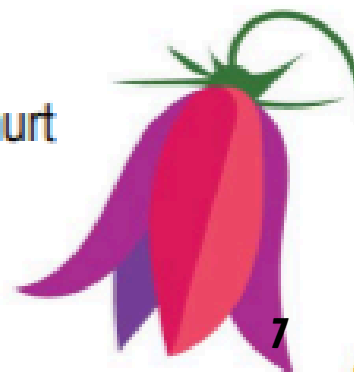
Chips and Baked 'Bees'  
(Beans!)

## DESSERTS

Honey Flapjack

Fresh Bread, Salad Bar, Fruit and Yoghurt  
also available

\*Menus may be subject to change



**WALK THIS MAY PRESENTS**

# **THE CASE OF THE MISSING WALKING BOOTS ROYSTON**

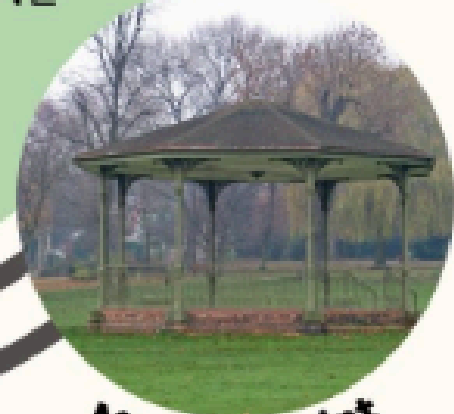
**Put your detective skills to the test and join us for this mystery themed walk!**

**Can you figure out who stole the walking boots?**



**When:** Tuesday 19 May,  
3:30pm to 5pm

**Meeting Point:** Royston  
Park bandstand, S71 4NE



**Meeting point**

**All children must be accompanied by an adult**



# Coming to your community soon

Barnsley Adult Skills and Community Learning  
will be starting new courses in

**Wellbeing**

**English**

**Maths**

**Digital Skills**

in June and September 2026 at

**Athersley Roundhouse**

For more information  
or to book a place:



 01226775270

 [adultlearning@barnsley.gov.uk](mailto:adultlearning@barnsley.gov.uk)

scan the QR code to contact us online