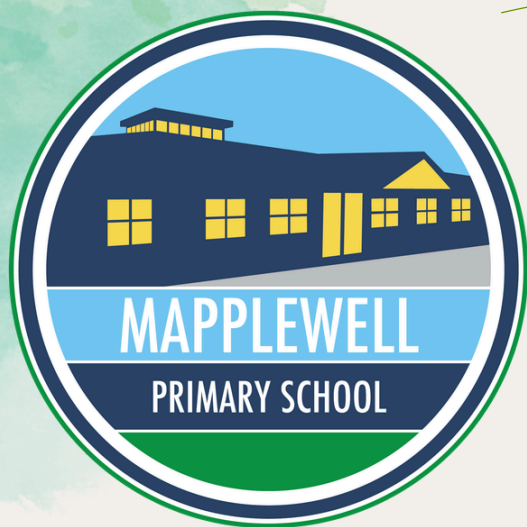


Weekly Bulletin



W/E 01/05/2026

SUMMER 1



Year 6 SATs Week Breakfast Club

We are offering a free Breakfast Club for all Year 6 Pupils to attend and preparation for SATs week (Monday to Thursday)
11th to 14th May
start time **8.00 am.**



SCHOOL ATTENDANCE

Class 1 92%
Class 2 99%
Class 3 87%
Class 4 96%
Class 5 100%
Class 6 96%
Class 7 96%
Class 8 92%
Class 9 97%
Class 10 96%
Class 11 96%

WHOLE SCHOOL: 95%



1





KS2 – Music Festival

‘A festival to showcase the talents of children ages 7-11 who have been having music lessons at school as part of a whole class.’

Tuesday 23rd June 2026
1:30pm
The Metrodome Arena

Audience admission £5
payable on the door.



ATTENDANCE

We are pleased to note an improvement in attendance.
Thank you for your continued support, and please keep it up.



Walk to School Week

Walk to School Week 2026 takes place from
Monday 18 May to Friday 22 May,
encouraging children to walk, wheel, cycle, or scoot to school while promoting health, safety, and environmental awareness.



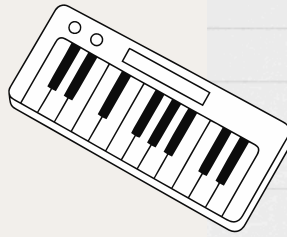
AFTER SCHOOL CLUBS:

Clubs for next term Summer 1 start W/C 13/04/2026, the last club will be Thursday 21st May 2026.

There will be no clubs on Monday 4th May as this is May Day Bank Holiday

Monday

- Cooking Club - Yr 3/4/5/6 - C3
- Quiz Club - Y3 - Y6 - C7
- Board Games Club - Y1 - Y6- C9
- Lunchtime Keyboard Club - KS2
- Reception and KS1 Choir - C1



✔ Quiz

Tuesday

- Art Club - KS1 - C4
- Creative Club - KS1
- SATS Boosters - Year 6- C10/C11



Wednesday

- Grassroots Dance Year KS1 and KS2 - Hall
- Lunchtime Choir Club - KS2

Thursday

- Lunchtime Guitar Club -Year 5 and 6 - C12
- Crochet Club - KS2 - C6



COMMUNICATION

Please could you move your most recent email from the junk mail box to your inbox

Our Values

- Kind
- Resilient
- Independent
- Respectful
- Honest
- Safe
- Happy
- Teamwork



SPRING/SUMMER 2026 MENU

WEEK 3 MAPPLEWELL PRIMARY SCHOOL



	MONDAY	TUESDAY	WEDNESDAY	THURSDAY	FRIDAY
HOT DISHES	OPTION 1 Cheese and Tomato Pizza with Potato Wedges	THEME DAY Chicken Burger with Herby Diced Potatoes	Roast Gammon with Yorkshire Pudding, Potatoes and Gravy	Beef Lasagne with Garlic Doughballs	Fish Fingers with Chips
OPTION 2	Creamy Garlic Pasta	Quorn Chow Mein	Quorn Roast with Yorkshire Pudding, Potatoes and Gravy	Meatless Ball Sub with Potato Wedges	Quorn Dippers with Chips
OPTION 3	Jacket Potato with a Choice of Fillings	Jacket Potato with a Choice of Fillings	Jacket Potato with a Choice of Fillings	Jacket Potato with a Choice of Fillings	Jacket Potato with a Choice of Fillings
ALL DISHES ARE SERVED WITH CRUNCHY VEGETABLES AND / OR FRESH SALAD					
VEG	Green Beans Salad Bar	Sweetcorn Big Bowl Salad	Broccoli Carrots	Sweetcorn Salad Bar	Garden Peas Baked Beans
DESSERT	Watermelon	Vanilla Crunch	Oatie Biscuit with Fruit	Chocolate Fudge Cake	Ice Cream



AVAILABLE DAILY

Fresh Fruit, Freshly Baked Bread, Yoghurt and Water

4



Vegetarian



Wholegrain



Nutritionist's Choice



Oily Fish



Fruity



Vegan



Chartwells
Schools

Our menu is subject to change. Please be assured that all notified medical diets and allergy requirements will be safely catered for.



MAPPLEWELL HOUSE POINTS



Pupils work as a team in their house
to earn the most Mapplewell points
The house with the most points
by the end of the term
will earn a reward as a house
Below is points so far this term....

Cannon Hall House: **857pts**

Locke Park House: **865pts**

Metrodome House: **804pts**

Oakwell House: **785pts**



5





Inset Days

2025/2026

Friday 19th June

Monday 20th July

Key Dates

May 2026

Monday 11th - 15th May

KS2 SATs week - Breakfast Club offered to Y6

W/C 18th May

KS1 SATs week

June 2026

W/c 8th June

Phonics Screening

Tuesday 16th June - Wednesday 17th June

Trip to PGL Residential - Year 4

Tuesday 23rd June

Trip to Magna - Year 5

Tuesday 23rd June

KS2 Music Festival Brass - Year 4

Wednesday 24th June

Trip to Magna - Year 6

Thursday 25th June

KS2 Sports Day - Dorothy Hyman

Friday 26th June

KS1 Sports Day - School field

Tuesday 30th June

EYFS Trip to Sundown Adventureland
Class 1 and Class 2

SCHOOL HOLIDAYS

2025/2026

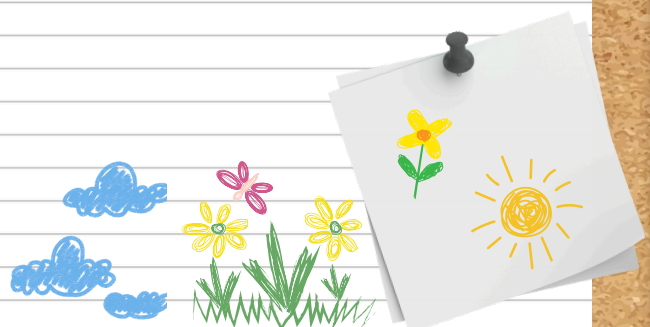
SCHOOL HOLIDAYS

MON 25TH MAY- FRI 29TH MAY

TUES 21ST JULY- MON 31ST AUG

BANK HOLIDAYS

MON 4TH MAY



Wednesday 20th May 2026

WORLD BEE DAY



MAINS

Hot Honey Chicken Bites, Hot
Honey Quorn Bites (V)

SIDES

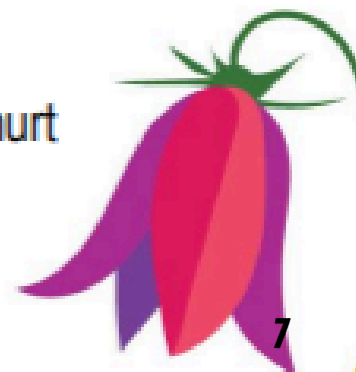
Chips and Baked 'Bees'
(Beans!)

DESSERTS

Honey Flapjack

Fresh Bread, Salad Bar, Fruit and Yoghurt
also available

*Menus may be subject to change



Jolly Good Communities presents

MEDIEVAL MAYHEM!



Opening times



11am - 4pm

Free Parking



Follow S71 5QE

Available now!



Book in advance for
the best price!

Advanced Tickets
Adult £5 - Child £3

General Admission
Adult £7 - Child £5

Book online



Jester Shows



Knight Battles



Axe Throws



Puppet Theatre



Traders Galore



Living History



Archery Anarchy



Birds of Prey



Hog Roast



Food Feasts



Fire Breathers

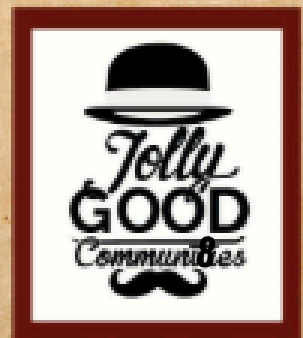


Cold Ale

Come one, come all and join us for a weekend of merriment, mischief & marvellous medieval madness!

This is a fundraising event, run by the community, for the community.
The more support we receive in advance, the more mayhem we can book!

jollygoodcommunities.org.uk





**BARNSELY FC
COMMUNITY TRUST**

MAY

FOOTBALL CAMPS

9am - 3pm

Ages 5-14

Our holiday courses are delivered by qualified coaches and open to boys and girls of all abilities. Giving them the opportunity to:

- Learn new skills
- Improve their technique through a variety of activities
- Have loads of fun!

£15

£55
Per Week

£17
Friday



MINI KICKERS

FRIDAY | 10:30AM - 11AM

This session is designed to help budding young football stars!

£4

AGES 2-5



GOAL KEEPER TRAINING

TUESDAY 26TH

Join our goalkeeper sessions and develop key skills in a fun environment!

Includes McDonalds Happy Meal

For more information please contact Aidan.Wearmouth@barnsleyfc.co.uk

9



BOOK NOW