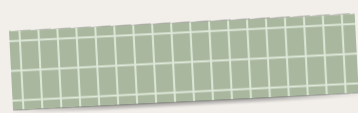
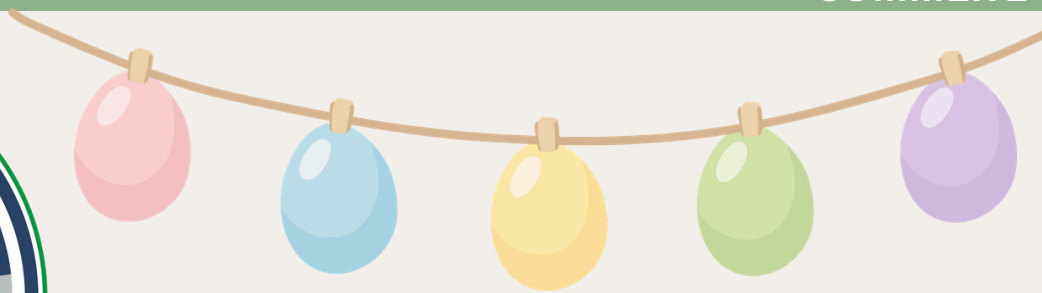
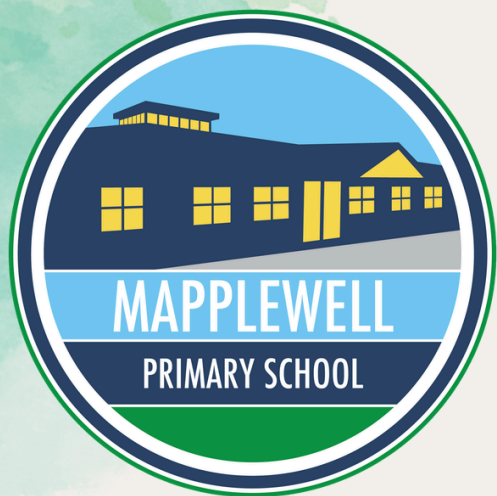


Weekly Bulletin



W/E 17/04/2026

SUMMER 1



SCHOOL ATTENDANCE

- Class 1 98%
- Class 2 98%
- Class 3 95%
- Class 4 94%
- Class 5 100%
- Class 6 94%
- Class 7 98%
- Class 8 95%
- Class 9 95%
- Class 10 97%
- Class 11 98%

WHOLE SCHOOL: 96%



School Photography Company

The school photography company will be coming into school on **Friday 1st May** to do **whole class photographs** throughout the day.





Year 1 Phonics Workshop

We are pleased to invite you to an upcoming phonics workshop on

Tuesday 21st April at 3:30pm, where we will recap how phonics is taught in school and how you can further support your child at home in preparation for their phonics screening.

We hope you can attend, please make your booking through **Arbor under trips.**



Year 2 SATs Parent Workshop

On **Monday 20th April at 4:30pm** we are holding a parent workshop for Year 2 parents.

Please book your place on Arbor under the trips section



**LITTLE STEPS
MATTER**

Attendance has been improving, and it shows how dedicated you are. Keep going.
Every day in school counts

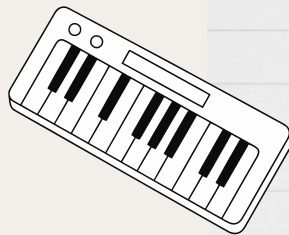
AFTER SCHOOL CLUBS:

Clubs for next term Summer 1 start W/C 13/04/2026, the last club will be Thursday 21st May 2026.

There will be no clubs on Monday 4th May as this is May Day Bank Holiday

Monday

- Cooking Club - Yr 3/4/5/6 - C3
- Quiz Club - Y3 - Y6 - C7
- Board Games Club - Y1 - Y6- C9
- Lunchtime Keyboard Club - KS2
- Reception and KS1 Choir - C1



✔ Quiz

Tuesday

- Art Club - KS1 - C4
- Creative Club - KS1
- SATS Boosters - Year 6- C10/C11



Wednesday

- Grassroots Dance Year KS1 and KS2 - Hall
- Lunchtime Choir Club - KS2

Thursday

- Lunchtime Guitar Club - Year 5 and 6 - C12
- Microbit - KS2 - C10
- Crochet Club - KS2 - C6



COMMUNICATION

Please could you move your most recent email from the junk mail box to your inbox

Our Values

- Kind
- Resilient
- Independent
- Respectful
- Honest
- Safe
- Happy
- Teamwork



3

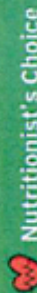
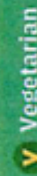
SPRING/SUMMER 2026 MENU

WEEK 1 MAPPLEWELL PRIMARY SCHOOL

		MONDAY	TUESDAY	WEDNESDAY	THURSDAY	FRIDAY
HOT DISHES	OPTION 1	Cheese and Tomato Pizza with Potato Wedges 	All Day Breakfast 	Roast Chicken with Sage & Onion Stuffing, Potatoes and Gravy 	Chicken Korma with Wholegrain Rice 	Fish Fingers with Chips
	OPTION 2	Red Pesto Spaghetti 	Sweet Potato & Vegetable Curry with Wholegrain Rice 	Quorn Roast with Sage & Onion Stuffing, Potatoes and Gravy 	Cheese & Baked Bean Turnover with Potato Wedges 	Quorn Dippers with Chips 
	OPTION 3	Jacket Potato with a Choice of Fillings 	Jacket Potato with a Choice of Fillings 	Jacket Potato with a Choice of Fillings 	Jacket Potato with a Choice of Fillings 	Jacket Potato with a Choice of Fillings 
ALL DISHES ARE SERVED WITH CRUNCHY VEGETABLES AND / OR FRESH SALAD						
VEG		Sweetcorn Salad Bar 	Garden Peas Big Bowl Salad 	Broccoli Carrots 	Mixed Salad Sweetcorn 	Garden Peas Baked Beans 
DESSERT		Watermelon 	Berry Blondie	Lemon Cookie with Fruit 	Chocolate Crunch	Ice Cream

AVAILABLE DAILY

Fresh Fruit, Freshly Baked Bread, Yoghurt and Water



chartwells
Schools



Our menu is subject to change. Please be assured that all notified medical diets and allergy requirements will be safely catered for.



MAPPLEWELL HOUSE POINTS



Pupils work as a team in their house
to earn the most Mapplewell points
The house with the most points
by the end of the term
will earn a reward as a house
Below is points so far this term....

Cannon Hall House: **167pts**

Locke Park House: **200pts**

Metrodome House: **179pts**

Oakwell House: **172pts**



5



Inset Days

2025/2026

Friday 19th June

Monday 20th July

Key Dates

Apr 2026

Monday 20th April
Year 2 SAT's workshop - 4:30pm
Booking available via Arbor under Trips

Tuesday 21st April
Phonics workshop
Booking available via Arbor under Trips

May 2026

Friday 1st May
Whole class photos only

Monday 11th - 15th May
KS2 SATS week

June 2026

W/c 8th June
Phonics Screening

SCHOOL HOLIDAYS

2025/2026

SCHOOL HOLIDAYS

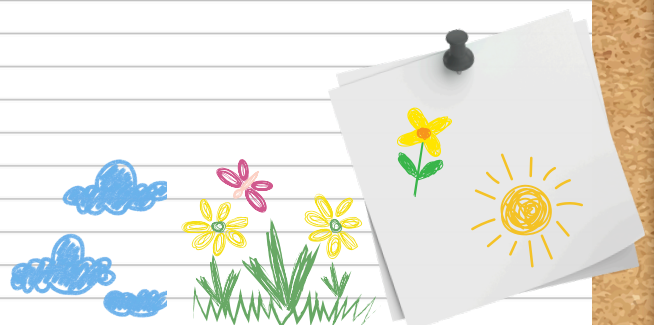
MON 30TH MARCH- FRI 10TH APRIL

MON 25TH MAY- FRI 29TH MAY

TUES 21ST JULY- MON 31ST AUG

BANK HOLIDAYS

MON 4TH MAY



Jolly Good Communities presents

MEDIEVAL MAYHEM!



Opening times



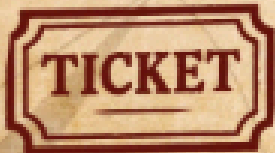
11am - 4pm

Free Parking



Follow S71 5QE

Available now!



Book in advance for
the best price!

Advanced Tickets
Adult £5 - Child £3

General Admission
Adult £7 - Child £5

Book online



Jester Shows



Knight Battles



Axe Throws



Puppet Theatre



Traders Galore



Living History



Archery Anarchy



Birds of Prey



Hog Roast



Food Feasts



Fire Breathers



Cold Ale

Come one, come all and join us for a weekend of merriment, mischief & marvellous medieval madness!

This is a fundraising event, run by the community, for the community. The more support we receive in advance, the more mayhem we can book!

jollygoodcommunities.org.uk

