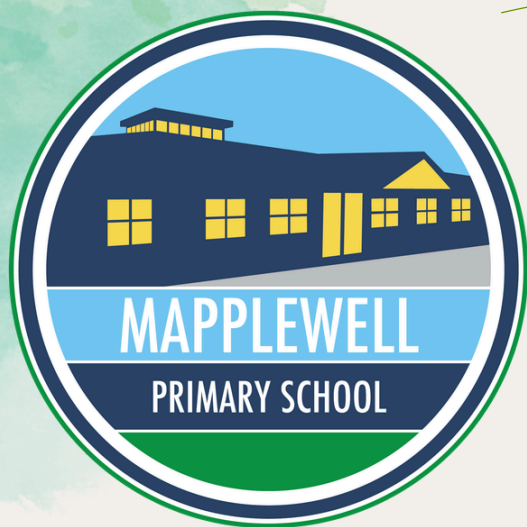


Weekly Bulletin



W/E 24/04/2026

SUMMER 1



SCHOOL ATTENDANCE

Class 1	95%
Class 2	95%
Class 3	95%
Class 4	93%
Class 5	98%
Class 6	98%
Class 7	98%
Class 8	96%
Class 9	97%
Class 10	98%
Class 11	99%

WHOLE SCHOOL: 96%



School Photography Company

The school photography company will be coming into school on

Friday 1st May

to do whole class photographs throughout the day.



1





Year 6 SATs Week Breakfast Club

We are offering a free Breakfast Club for all Year 6 Pupils to attend and preparation for SATs week (Monday to Thursday) **11th to 14th May** start time **8.00 am.**



ATTENDANCE

We are pleased to note an improvement in attendance this week. Thank you for your continued support, and please keep it up.



House winners - UV Dodgeball

Last Friday, pupils from Cannon Hall House celebrated winning the House Award for the Spring Term with an exciting session of UV dodgeball. The children had a fantastic time, and the photos included show just how much fun we all had. A big thank you to Mrs Trainer for arranging and organising such a brilliant day for everyone.

Take a look at the pictures below!





Y1/2



Y3/4





Y5/6





New Meal Supplier -Chartwells

Our school dinners are now supplied by Chartwells who's purpose is to put delicious, nutritious food on plates to support young peoples health, wellbeing, learning and development. Both pupils and Staff have commented on how nice the meals are!



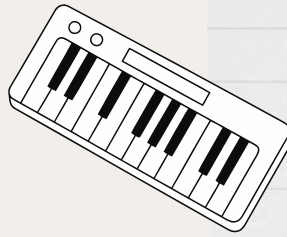
AFTER SCHOOL CLUBS:

Clubs for next term Summer 1 start W/C 13/04/2026, the last club will be Thursday 21st May 2026.

There will be no clubs on Monday 4th May as this is May Day Bank Holiday

Monday

- Cooking Club - Yr 3/4/5/6 - C3
- Quiz Club - Y3 - Y6 - C7
- Board Games Club - Y1 - Y6- C9
- Lunchtime Keyboard Club - KS2
- Reception and KS1 Choir - C1



✔ Quiz

Tuesday

- Art Club - KS1 - C4
- Creative Club - KS1
- SATS Boosters - Year 6- C10/C11



Wednesday

- Grassroots Dance Year KS1 and KS2 - Hall
- Lunchtime Choir Club - KS2

Thursday

- Lunchtime Guitar Club - Year 5 and 6 - C12
- Microbit - KS2 - C10
- Crochet Club - KS2 - C6



COMMUNICATION

Please could you move your most recent email from the junk mail box to your inbox

Our Values

- Kind
- Resilient
- Independent
- Respectful
- Honest
- Safe
- Happy
- Teamwork



SPRING/SUMMER 2026 MENU

WEEK 2 MAPPLEWELL PRIMARY SCHOOL



	MONDAY	TUESDAY	WEDNESDAY	THURSDAY	FRIDAY
HOT DISHES					
OPTION 1	Cheese and Tomato Pizza with Potato Wedges	Beef Burger with Herby Diced Potatoes	Roast Pork with Yorkshire Pudding, Potatoes and Gravy	Chicken Tandoori with Wholegrain Rice and Naan Bread	Fish Fingers with Chips
OPTION 2	Macaroni Cheese	Vegetable Korma with Wholegrain Rice	Quorn Roast with Yorkshire Pudding, Potatoes and Gravy	Veggie Burger with Herby Diced Potatoes	Quorn Dippers with Chips
OPTION 3	Jacket Potato with a Choice of Fillings	Jacket Potato with a Choice of Fillings	Jacket Potato with a Choice of Fillings	Jacket Potato with a Choice of Fillings	Jacket Potato with a Choice of Fillings
VEG	Sweetcorn Salad Bar	Garden Peas Mixed Salad	Cabbage Carrots	Sweetcorn Big Bowl Salad	Garden Peas Baked Beans
DESSERT	Watermelon	Chocolate Marble Cake	Shortbread with Fruit	Chocolate Cookie	Ice Cream
ALL DISHES ARE SERVED WITH CRUNCHY VEGETABLES AND / OR FRESH SALAD					



AVAILABLE DAILY

Fresh Fruit, Freshly Baked Bread, Yoghurt and Water



Vegetarian



Wholegrain



Olily Fish



Fruity



VE Vegan

Our menu is subject to change. Please be assured that all notified medical diets and allergy requirements will be safely catered for.



MAPPLEWELL HOUSE POINTS



Pupils work as a team in their house
to earn the most Mapplewell points
The house with the most points
by the end of the term
will earn a reward as a house
Below is points so far this term....

Cannon Hall House: **433pts**

Locke Park House: **459pts**

Metrodome House: **428pts**

Oakwell House: **421pts**



9





Inset Days

2025/2026

Friday 19th June

Monday 20th July

Key Dates

May 2026

Friday 1st May

Whole class photos only

Monday 11th - 15th May

KS2 SATs week - Breakfast Club offered to Y6

W/C 18th May

KS1 SATs week

June 2026

W/c 8th June

Phonics Screening

Tuesday 16th June - Wednesday 17th June

Trip to PGL Residential - Year 4

Tuesday 23rd June

Trip to Magna - Year 5

Tuesday 23rd June

KS2 Music Festival Brass - Year 4

Wednesday 24th June

Trip to Magna - Year 6

Thursday 25th June

KS2 Sports Day - Dorothy Hyman

Friday 26th June

KS1 Sports Day - School field

Tuesday 30th June

EYFS Trip to Sundown Adventureland
Class 1 and Class 2

SCHOOL HOLIDAYS

2025/2026

SCHOOL HOLIDAYS

MON 25TH MAY- FRI 29TH MAY

TUES 21ST JULY- MON 31ST AUG

BANK HOLIDAYS

MON 4TH MAY



Jolly Good Communities presents

MEDIEVAL MAYHEM!

Opening times



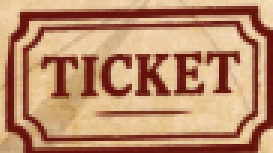
11am - 4pm

Free Parking



Follow S71 5QE

Available now!



Book in advance for
the best price!

Advanced Tickets
Adult £5 - Child £3

General Admission
Adult £7 - Child £5

Book online



Jester Shows



Knight Battles



Axe Throws



Puppet Theatre



Traders Galore



Living History



Archery Anarchy



Birds of Prey



Hog Roast



Food Feasts



Fire Breathers



Cold Ale

Come one, come all and join us for a weekend of merriment, mischief & marvellous medieval madness!

This is a fundraising event, run by the community, for the community.
The more support we receive in advance, the more mayhem we can book!

jollygoodcommunities.org.uk

