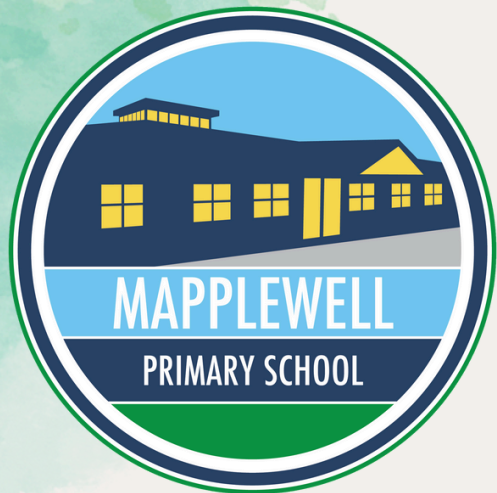


Weekly Bulletin

W/E 30/01/2026



SPRING 1

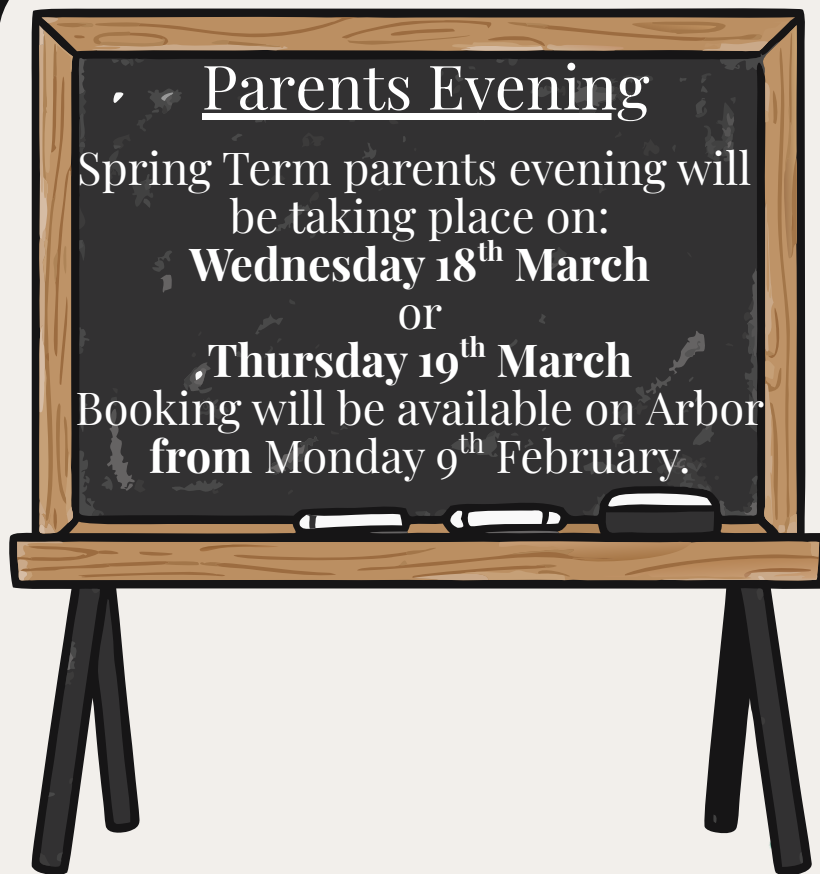


SCHOOL ATTENDANCE

Class 1 99%
Class 2 98%
Class 3 95%
Class 4 97%
Class 5 97%
Class 6 89%
Class 7 100%
Class 8 99%
Class 9 97%
Class 10 87%
Class 11 93%



WHOLE SCHOOL: 95%



Parents Evening

Spring Term parents evening will be taking place on:

Wednesday 18th March

or

Thursday 19th March

Booking will be available on Arbor from Monday 9th February.

Year 5 visit to Butterfly House

Year 5 children have the exciting opportunity to visit the Tropical Butterfly House on **Monday 16th March.**

Please book via Arbor



MAPPLEWELL PRIMARY SCHOOL



Year 3/4 Production **Tuesday 24th March**



Join the feisty Chickalita in this story of unlikely friendships, big dreams and a whole lot of singing! Get ready for some dancing flamingos, a thieving old grandma, a goat with a business brain and SO many more characters that'll have audiences on the edge of their seats, and eventually up on their feet!

The date of the performance is **Tuesday 24th March**.
The dress rehearsal will be **the day before**. There will be a morning performance to start at **9:15am** and an afterschool performance to start at **3:30pm**.

Current Year 5 (Next Year 6) Visit to **Robinwood Residential 19th - 21st October 2026**

Current Year 5 children have the opportunity to take part in the Residential Visit to Robinwood due to take place in **October 26**, which they will then be in year 6.

To secure your child's place you will need to pay the deposit that will be set up on Arbor on and after **Friday the 13th February**.

Further instalments will be set up monthly to help in making the payments more affordable, however you can pay in full if you wish to.

Robinwood is designed to make a really positive difference in the development of each child that attends.



Year 3 and 4 trip to sporting event - 6 March 2026

Barnsley Sports Academy, Honeywell Lane,

Year 3 and 4 have been invited to take part in a sporting event, this is a free event. Only a contribution towards the coaches is required.

The itinerary will be as below:

- 09:50- Arrive
- 10-11.30- Y4 Golf and Y3 UV dodgeball
- 11:30-12:15- we would play some games with all our children in the sports hall (run by our teaching staff if needed)
- 12:15-13:00- Lunch
- 13:14:30- Y3 Golf and Y4 UV Dodgeball
- 14:30- be collected by the bus

Please make payment under trips via Arbor.
Please ensure your child has a packed lunch and drink.



Intramural Gymnastics Showcase Wednesday

11th February 2026

We will be holding our Intramural Gymnastics showcase for KS1 and KS2.
Please ensure your child comes to school in their PE kit, which includes black bottoms, trainers, and a white t-shirt.

Parents/Carers are welcome to watch at the times indicated below:

GYMNASTICS

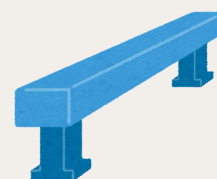
9:15 -UKS2 (Years 5/6)

10.30- LKS2 (Years 3/4)

14.15 - KS1 (Years 1/2)

Hope you can all join us

Entrance through the Breakfast club doors

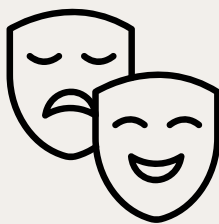


AFTER SCHOOL CLUBS:

Clubs for next term Spring 1 start
W/C 06/01/2026, the last club
being Thursday 12th February
2026

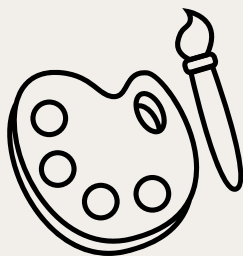
Monday

- Chess Club - KS2
- Diamond Art Club KS2
- Drama Club- Year 3 - 6
- Lunchtime Keyboard Club - KS2
- Mapplewell's Got Talent
- Reception and KS1 Choir



Tuesday

- Chess Club - KS2
- Art Club - KS1
- Boosters - Year 6



Wednesday

- Young Voices Choir (Lunchtime)
- Grassroots Dance Year KS1 and KS2



Thursday

- Arts & Crafts Club- FS2 (Class 1 & 2)
- Lunchtime Guitar Club -Year 5 and 6
- Art Club - KS2



COMMUNICATION

Please could you
move your most
recent email
from the junk
mail box to your
inbox



Our Values

- Kind
- Resilient
- Independent
- Respectful
- Honest
- Safe
- Happy
- Teamwork



Mapplewell Primary's Silent Disco

Dress Code:
Party Clothes

THURSDAY | 12TH FEB | £5 A TICKET
ON ARBOR

REC & KS1
3:15PM - 4:25PM
(STRAIGHT FROM
SCHOOL)

DROP OFF AND
COLLECTION AT
CLASSROOM
DOORS

KS2
4:25PM - 5:45PM

MAPPLEWELL HOUSE POINTS



Pupils work as a team in their house
to earn the most Mapplewell points
The house with the most points
by the end of the term
will earn a reward as a house
Below is points so far this term....

Cannon Hall House: **1268pts**

Locke Park House: **1342pts**

Metrodome House: **1181pts**

Oakwell House: **1301pts**



Key Dates

Feb 2026

Tuesday 10th February
Young Voices

Thursday 12th February
Valentines Disco
Tickets now available on Arbor

Friday 13th February
EYFS Balance Bikes

Monday 23rd February
Living Eggs Delivered to Nursery and Reception



Mar 2026

Friday 6th March
Year 3 and 4 sporting trip
Please book via Arbor

Monday 16th March
Year 5 trip to Butterfly House
Please book via Arbor

Wednesday 18th and Thursday 19th March
Parents Evening
Booking will be available on Arbor from
Monday 9th February

Tuesday 24th March
Year 3 and 4 Production
Tickets will be available from
Tuesday 3rd February
£1 per ticket per performance

Thursday 26th March
Mapplewell's Got Talent - 4 pm
More information to follow

Inset Days

2025/2026

Friday 19th June

Monday 20th July

SCHOOL HOLIDAYS

2025/2026

SCHOOL HOLIDAYS

MON 16TH FEB-FRI 20TH FEB

(UPDATED)

MON 30TH MARCH- FRI 10TH APRIL

MON 25TH MAY- FRI 29TH MAY

TUES 21ST JULY- MON 31ST AUG

BANK HOLIDAYS

MON 4TH MAY

