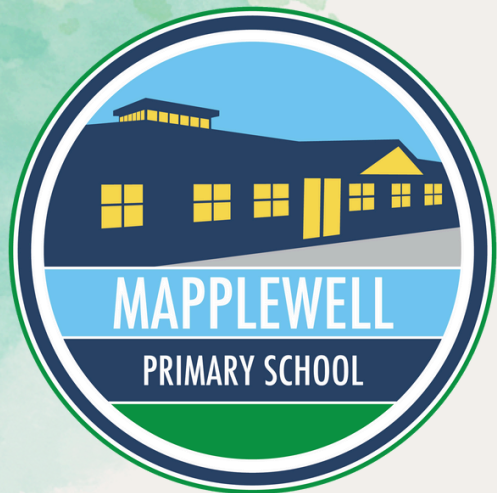


# Weekly Bulletin



W/E 16/01/2026

SPRING 1



## SCHOOL ATTENDANCE

Class 1 98%  
Class 2 90%  
Class 3 98%  
Class 4 99%  
Class 5 100%  
Class 6 95%  
Class 7 98%  
Class 8 98%  
Class 9 95%  
Class 10 91%  
Class 11 96%



**WHOLE SCHOOL: 96%**

## Shakespeare Explorer Workshop

Year 5 and 6 will be taking part in a Shakespeare Explorer workshop on **Tuesday 20th January** in school. Please make payment via Arbor under trips.



## Year 5 visit to Butterfly House

Year 5 children have the exciting opportunity to visit the Tropical Butterfly House on **Monday 16<sup>th</sup> March**. More information about booking to follow soon.



MAPPLEWELL PRIMARY SCHOOL

## Year 3/4 Production Tuesday 24th March

Join the feisty Chickalita in this story of unlikely friendships, big dreams and a whole lot of singing! Get ready for some dancing flamingos, a thieving old grandma, a goat with a business brain and SO many more characters that'll have audiences on the edge of their seats, and eventually up on their feet!

The date of the performance is **Tuesday 24th March**.  
The dress rehearsal will be **the day before**. There will be a morning performance to start at **9:15am** and an afterschool performance to start at **3:30pm**.





## EYFS Book – Amazon Wishlist

We are always looking for ways to enrich our reading environment and foster a love of books among the children. To help us do this, we have created an Amazon Book Wish List with a selection of books that would support our curriculum and encourage reading for pleasure.

Please see the link below:  
<https://amzn.eu/aMKeAxxh>



## Year 6 SATS Workbooks

Year 6 SATS Revision books are now available to purchase via Arbor Shop.

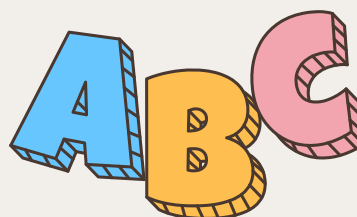
We get a discount when ordering from school rather than ordering direct from CGP. If you would like to order please do so before the end of the month.



## Nursery Parents Phonics Workshop

Nursery parents are invited to a workshop called 'Our Approach to Phonics' on **Monday 19<sup>th</sup> January at 4pm.**

If you would like to attend please book your place on Arbor under the trips section.



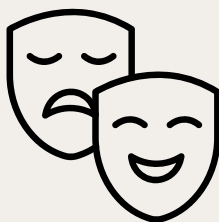


## AFTER SCHOOL CLUBS:

Clubs for next term Spring 1 start  
W/C 06/01/2026, the last club  
being Thursday 12<sup>th</sup> February  
2026

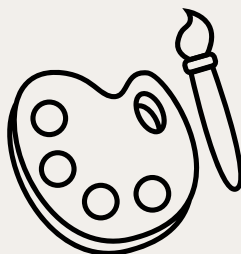
### Monday

- Chess Club - KS2
- Diamond Art Club KS2
- Drama Club- Year 3 - 6
- Lunchtime Keyboard Club - KS2
- Mapplewell's Got Talent
- Reception and KS1 Choir



### Tuesday

- Chess Club - KS2
- Art Club - KS1
- Boosters - Year 6



### Wednesday

- Young Voices Choir (Lunchtime)
- Grassroots Dance Year KS1 and KS2



### Thursday

- Arts & Crafts Club- FS2 (Class 1 & 2)
- Lunchtime Guitar Club -Year 5 and 6
- Art Club - KS2



## COMMUNICATION

Please could you  
move your most  
recent email  
from the junk  
mail box to your  
inbox



### Our Values

- Kind
- Resilient
- Independent
- Respectful
- Honest
- Safe
- Happy
- Teamwork





# MAPPLEWELL HOUSE POINTS



Pupils work as a team in their house  
to earn the most Mapplewell points  
The house with the most points  
by the end of the term  
will earn a reward as a house  
Below is points so far this term....

Cannon Hall House: **549pts**

Locke Park House: **613pts**

Metrodome House: **552pts**

Oakwell House: **655pts**



# Key Dates

## Jan 2026

**Monday 19th January**  
**Nursery Parents Workshop - 4pm**  
Please book via Arbor

**Tuesday 20<sup>th</sup> January**  
**Shakespeare Explorer Workshop**  
Please book via trips on Arbor

**Friday 30<sup>th</sup> January**  
**Diving trip to Ponds Forge**  
for those who have booked on Arbor

## Feb 2026

**Tuesday 10<sup>th</sup> February**  
**Young Voices**

**Thursday 12<sup>th</sup> February**  
**Valentines Disco**  
More info to follow

## Inset Days

2025/2026

Friday 19<sup>th</sup> June

Monday 20<sup>th</sup> July

## SCHOOL HOLIDAYS

2025/2026

## SCHOOL HOLIDAYS

MON 16<sup>TH</sup> FEB-FRI 20<sup>TH</sup> FEB

(UPDATED)

MON 30<sup>TH</sup> MARCH- FRI 10<sup>TH</sup> APRIL

MON 25<sup>TH</sup> MAY- FRI 29<sup>TH</sup> MAY

TUES 21<sup>ST</sup> JULY- MON 31<sup>ST</sup> AUG

## BANK HOLIDAYS

MON 4<sup>TH</sup> MAY





# MAPPLEWELL'S GOT TALENT 2026

Do you love to sing, dance, act, tell jokes, play an instrument, perform magic or show off a special skill?

This is your moment to shine!

Please book a slot on one of the audition dates - 12<sup>th</sup>, 19<sup>th</sup> or 26<sup>th</sup> January 2026.

You must then be available for rehearsals every Monday after school until show night.

**SHOW - WK COMMENCING  
16<sup>TH</sup> MARCH 2026**