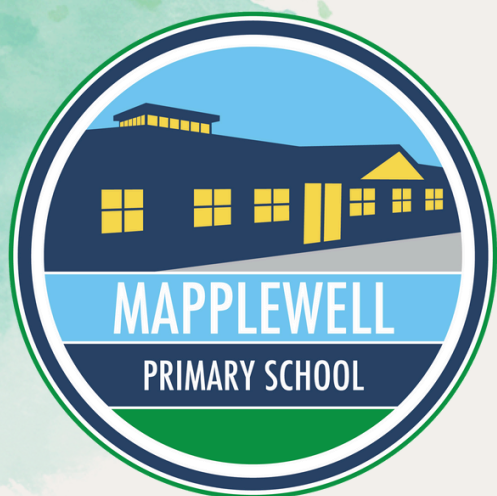


Weekly Bulletin

W/E 05/12/2025

Autumn 2025/2026



SCHOOL ATTENDANCE

Class 1 100%
Class 2 97%
Class 3 92%
Class 4 96%
Class 5 99%
Class 6 94%
Class 7 99%
Class 8 99%
Class 9 97%
Class 10 95%
Class 11 97%



WHOLE SCHOOL: 96%

Donations - Christmas

Jumper Sale

On Monday 8th, Tuesday 9th and Wednesday 10th December, at 8:30am we will be selling donated Christmas Jumpers in the school playground for **£3 each**.

Monies raised will be split between Barnsley Hospital Charity and School Resources.

If you have any old christmas jumpers that you could donate please drop these into the office by **Friday 5th December** so they can be washed and ready for sale



Win a Christmas Hamper!

Raffle tickets for sale at events/reception

£1.00 a strip





Nursery singalong

Join us on
Thursday 11th December at
11.00 am to watch Nursery's
Christmas Singalong!

This is a free event and we
are welcoming all family
members to join in this
festive event!

Entry will be through the
Breakfast Club doors.

**Book to confirm your
attendance on Arbor**

Reception Nativity and KS1 Nativity

This year Reception Nativity, held at St
John's Church, is on
Monday 8th December at
9:30am OR 2pm
and
KS1 Nativity, held in the school hall is on
Tuesday 9th December at
9:30am OR 2pm

Tickets for both nativities are now for
sale on Arbor Shop

Please only book one of the sessions so
every child has the opportunity for their
family member to watch them.

Christmas Parties

Class Parties are taking place
week commencing 15th December
(please see poster below for more
details)

Christmas Party food will be
available for all children, except
Nursery, as the dinner choice on
Thursday 18th December.



York Chocolate Factory



We are holding a trip for our Year 3
and 4 to visit York Chocolate
Factory.

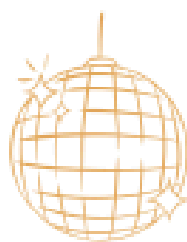
Year 3 - 10th December
Year 4 - 11th December

This will be an amazing trip and
will involve exploring three floors
filled with interactive exhibitions,
unwrapping the secrets of making
delicious chocolate and have the
chance to observe a chocolate
making demonstration

**Please consent and make payment
via Arbor under the trips section**



Christmas Party Days



Children on their Christmas party day can come to school in their party clothes

Nursery and Reception Class

Monday 15th December

Year 1 and Year 2

Tuesday 16th December

Year 3 and Year 4

Wednesday 17th December

Year 5 and Year 6

Thursday 18th December



Winter Party

18th of December 2025

Cheese, Ham or Tuna Sandwich

served with

Chicken goujons

Mini sausage or cheese & onion roll

Wedges and carrot & cucumber batons



Festive cupcake

or

Winter biscuit



Grassroots Elfy Holidays



Grassroots sports academy are hosting a
FREE Christmas event at the
Barnsley Metrodome

on
Tuesday 23rd December at 11am-3pm.

**The children eligible for this are children
on free school meals.**

If you would like your child to attend please
book tickets via
<https://eequ.org/book/elfy-holidays-the-elf-fest-with-grassroot-sports-academy-yorkshire-20681>

Christmas Dinner/ Christmas Jumper Day

On **Friday 12th December** it is both our
Christmas Dinner and Christmas Jumper
Day!

On this day all children are welcome to
come into school in their festive
**Christmas Jumper over their usual
uniform (school skirt/trousers)**

Please see poster below for dinner choice
on this day. Please make payment on
Arbor if you pay for School lunches.

**This year instead of money donations we
are accepting Chocolate Selection box
donations for Barnsley's Children's A&E
and Children's ward.**



Polite notice

- Could we kindly remind parents to ensure their children use the toilet and not the local areas around school – we have had complaints from residents.
- EYFS equipment is not be used before or after the school day. Also the top field is out of bounds.
- Please do not use the climbing frame before or after school day.

Thank you for your understanding
and co-operation in this matter

Christmas Music Celebration

This year our Christmas
Music Celebration is on
Monday 15th December
from **3.30pm**
in the School Hall.

This is an opportunity to
listen to some of our talented
pupils whilst browsing your
child's homemade Christmas
bauble.



The menu card is decorated with a festive border of colorful Christmas lights (red, green, blue, yellow) and various holiday-themed illustrations. At the top left, an elf in a green and red striped hat and tunic holds a red sack and a yellow bell. At the top right, another elf holds a red sack next to a snowman wearing a red top hat and scarf. On the left side, an elf is shown skateboarding. On the right side, an elf is depicted jumping. At the bottom, Santa Claus with a white beard and red suit is surrounded by two reindeer and two small decorated Christmas trees. The text is centered and written in a green, cursive font.

Festive Feast

12th December 2025

*Roast turkey
and Chipolata sausage*

or

Quorn Sausages

*all served with
stuffing, seasonal vegetables,
roast and mash potatoes*

Seasonal desserts

Christmas biscuits

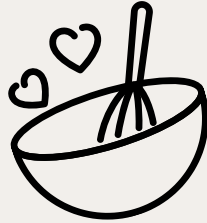


AFTER SCHOOL CLUBS:

Clubs for next term start W/C
03.11.25. The last week of
clubs will be 08.12.25

Monday

- Cooking Club- Year 5 & 6
- Multi Skills Club- Year 1 & 2
- Drama Club- Year 3 - 6
- Makaton Club- Year 3 & 4
- Lunchtime Keyboard Club - KS2



Tuesday

- Running Club- Year 1 - 6
- Dodgeball Club- Year 3 - 6
- Chess Club- Year 2 - 6
- Art Club- Year 1 & 2



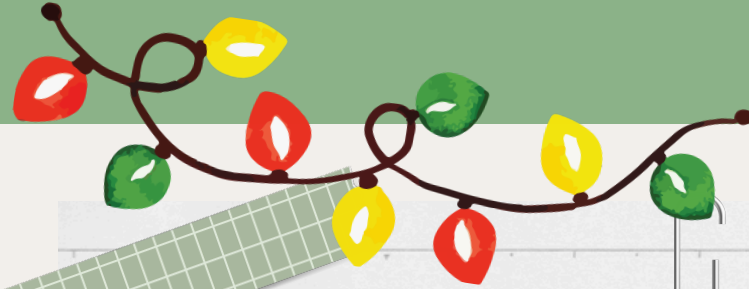
Wednesday

- Young Voices Choir (Lunchtime)
- Grassroots Gymnastics- Year 1 & 2



Thursday

- Arts & Crafts Club- FS2 (Class 1 & 2)
- Online Games Club- Year 1 - 2
- Lunchtime Guitar Club -Year 5 and 6



Autumn 2 Clubs

There are no clubs on the
following date;

Wednesday 12th November
Thursday 13th November
Monday 1st December
Thursday 4th December

These dates are not included
in the block booking

COMMUNICATION

Please could you
move your most
recent email
from the junk
mail box to your
inbox



Our Values

- Kind
- Resilient
- Independent
- Respectful
- Honest
- Safe
- Happy
- Teamwork



MAPPLEWELL HOUSE POINTS



Pupils work as a team in their house
to earn the most Mapplewell points
The house with the most points
by the end of the term
will earn a reward as a house
Below is points so far this term....

Cannon Hall House: 3777pts

Locke Park House: 3522pts

Metrodome House: 3690pts

Oakwell House: 3521pts



Key Dates

Dec 2025

Monday 8th December

Reception Nativity

9:30am or 2:00pm

Booking available on Arbor Shop

Tuesday 9th December

KS1 Nativity

9:30am or 2:00pm

Booking available on Arbor Shop

Thursday 11th December

Nursery Sing-a-long

11:00am Morning Nursery

Booking now available on Arbor

Friday 12th December

Christmas Jumper Day/Christmas Dinner Day

Accepting selection box donations for

Barnsley Hospital

Monday 15th December

Christmas Music Celebration

3:30pm in the School Hall

Tuesday 16th December

Class 1 and Class 2 - Christmas Crafts

Booking now available on Arbor

Inset Days

2025/2026

Monday 5th January

Friday 19th June

Monday 20th July

SCHOOL HOLIDAYS

2025/2026

SCHOOL HOLIDAYS

MON 22ND DEC- FRI 2ND JAN

MON 16TH FEB-FRI 20TH FEB (UPDATED)

MON 30TH MARCH- FRI 10TH APRIL

MON 25TH MAY- FRI 29TH MAY

TUES 21ST JULY- MON 31ST AUG

BANK HOLIDAYS

MON 4TH MAY