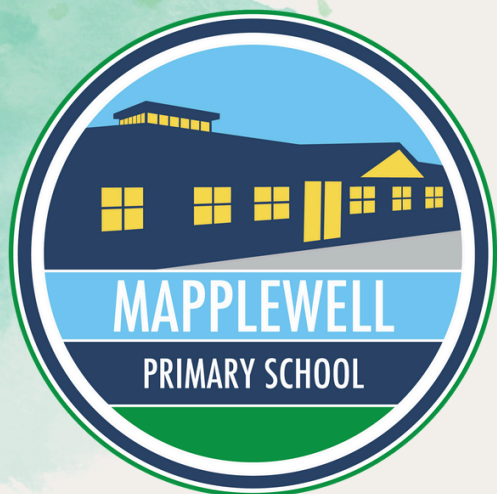


Weekly Bulletin



W/E 19/12/2025

Autumn 2025/2026



SCHOOL ATTENDANCE

Class 1 90%
Class 2 93%
Class 3 97%
Class 4 98%
Class 5 93%
Class 6 90%
Class 7 95%
Class 8 88%
Class 9 96%
Class 10 92%
Class 11 98%



WHOLE SCHOOL: 93%

Coal mining

We are holding a trip for our Year 3 and Year 4 children to visit the Coal Mining Museum.

Year 3 - Wednesday 7th January

Year 4 - Thursday 8th January

Children will be taking part in a workshop and time tunnel interactive tour which looks at the history of mining through 3 characters – one from 1830's, 1940's and 1970's.



Bikeability - Year 6

Bikeability cycle training will be delivered to school for Year 6 pupils, week commencing **Monday 12th January 2026**.

A consent form has been sent out via email.



MAPPLEWELL PRIMARY SCHOOL



Grassroots Elfy Holidays



Grassroots sports academy are hosting a **FREE** Christmas event at the
Barnsley Metrodome
on
Tuesday 23rd December at 11am-3pm.

The children eligible for this are children on free school meals.

If you would like your child to attend please book tickets via
<https://eequ.org/book/elfy-holidays-the-elf-fest-with-grassroot-sports-academy-yorkshire-20681>

Important information

It has been brought to our attention that a large number of vapes have recently been found in Mapplewell Park. As a school, we have spoken to our Year 5 and 6 pupils about the importance of never touching a vape and keeping themselves safe. We kindly ask parents and carers to be extra vigilant when visiting the park and to report any concerns to the appropriate authorities.

Thank you for your continued support in keeping our children safe.

Shakespeare Explorer Workshop

Year 5 and 6 will be taking part in a Shakespeare Explorer workshop on
Tuesday 20th January
in school.

Booking will be available via Arbor week commencing
5th January.





EYFS Book – Amazon Wishlist

We are always looking for ways to enrich our reading environment and foster a love of books among the children. To help us do this, we have created an Amazon Book Wish List with a selection of books that would support our curriculum and encourage reading for pleasure.



Please see the link below:
<https://amzn.eu/aMKeAxx>



Parent/Carer Feedback

We have had 28 responses so far to our parent feedback survey- thank you to those who have completed it.

Please click the link below to fill out the attached survey.

<https://forms.office.com/e/rPyRiqrSkb>



Polite notice

- Could we kindly remind parents to ensure their children use the toilet and not the local areas around school – we have had complaints from residents.
- EYFS equipment is not be used before or after the school day. Also the top field is out of bounds.
- Please do not use the climbing frame before or after school day.

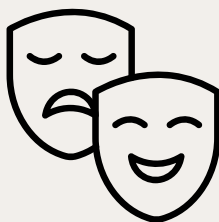
Thank you for your understanding and co-operation in this matter

AFTER SCHOOL CLUBS:

Clubs for next term Spring 1 start
**W/C 06/01/2025, the last club
being Thursday 12th February
2026**

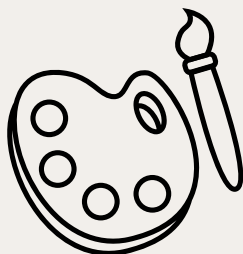
Monday

- Chess Club - KS2
- Diamond Art Club KS2
- Drama Club- Year 3 - 6
- Lunchtime Keyboard Club - KS2
- Mapplewell's Got Talent
- Reception and KS1 Choir



Tuesday

- Chess Club - KS2
- Art Club - KS1
- Boosters - Year 6



Wednesday

- Young Voices Choir (Lunchtime)
- Grassroots Dance Year KS1 and KS2



Thursday

- Arts & Crafts Club- FS2 (Class 1 & 2)
- Lunchtime Guitar Club -Year 5 and 6
- Art Club - KS2



COMMUNICATION

Please could you
move your most
recent email
from the junk
mail box to your
inbox



Our Values

- Kind
- Resilient
- Independent
- Respectful
- Honest
- Safe
- Happy
- Teamwork



MAPPLEWELL HOUSE POINTS



Pupils work as a team in their house
to earn the most Mapplewell points
The house with the most points
by the end of the term
will earn a reward as a house
Below is points so far this term....

Cannon Hall House: **4106pts**

Locke Park House: **3831pts**

Metrodome House: **4024pts**

Oakwell House: **3843pts**



Key Dates

Jan 2026

Monday 5th January
INSET day for all pupils

Wednesday 7th January
Year 3 trip to Coal Mining Museum
Please book via trips on Arbor

Thursday 8th January
Year 4 trip to Coal Mining Museum
Please book via trips on Arbor

Monday 12th January
Bikeability for Year 6 pupils
Consent forms have been sent out via email

Tuesday 20th January
Shakespeare Explorer Workshop
Booking will be available on Arbor soon

Inset Days 2025/2026

Monday 5th January

Friday 19th June

Monday 20th July

SCHOOL HOLIDAYS 2025/2026

MON 22ND DEC- FRI 2ND JAN

MON 16TH FEB-FRI 20TH FEB

(UPDATED)

MON 30TH MARCH- FRI 10TH APRIL

MON 25TH MAY- FRI 29TH MAY

TUES 21ST JULY- MON 31ST AUG

BANK HOLIDAYS

MON 4TH MAY



MAPPLEWELL'S GOT TALENT 2026

Do you love to sing, dance, act, tell jokes, play an instrument, perform magic or show off a special skill?

This is your moment to shine!

Please book a slot on one of the audition dates - 12th, 19th or 26th January 2026.

You must then be available for rehearsals every Monday after school until show night.

**SHOW - WK COMMENCING
16TH MARCH 2026**