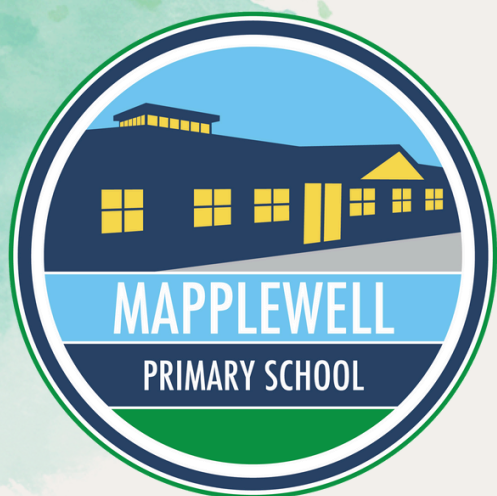


# Weekly Bulletin

W/E 28/11/2025

Autumn 2025/2026



## SCHOOL ATTENDANCE

Class 1 95%  
Class 2 94%  
Class 3 95%  
Class 4 98%  
Class 5 97%  
Class 6 95%  
Class 7 98%  
Class 8 96%  
Class 9 97%  
Class 10 95%  
Class 11 97%

**WHOLE SCHOOL: 96%**

## Donations - Christmas

### Jumper Sale

On Monday 8<sup>th</sup>, Tuesday 9<sup>th</sup> and  
Wednesday 10<sup>th</sup> December,  
at 8:30am

we will be selling donated Christmas  
Jumpers in the school playground for  
**£3 each.**

Monies raised will be split between  
Barnsley Hospital Charity and School  
Resources.

If you have any old christmas  
jumpers that you could donate please  
drop these into the office by  
**Friday 5<sup>th</sup> December** so they can be  
washed and ready for sale

## Christmas Crackers

We are collecting kitchen roll  
innners for our Handmade  
Christmas Crackers!   
If you have any please could you  
bring them into school.  
We are also politely asking for  
chocolate bar donations to be  
brought into school.



MAPPLEWELL PRIMARY SCHOOL

## Nursery singalong

Join us on  
**Thursday 11<sup>th</sup> December** at  
**11.00 am** to watch Nursery's  
Christmas Singalong!

This is a free event and we  
are welcoming all family  
members to come and join  
in this festive event!

Entry will be through the  
Breakfast Club doors.



## Reception Nativity and KS1 Nativity.

This year Reception Nativity, held at St  
John's Church, is on  
**Monday 8<sup>th</sup> December** at  
**9:30am OR 2pm**

and  
KS1 Nativity, held in the school hall is on  
**Tuesday 9<sup>th</sup> December** at  
**9:30am OR 2pm**

Tickets for both nativities are now for  
sale on Arbor Shop

Please only book one of the sessions so  
every child has the opportunity for their  
family member to watch them.



## Santa Saunter

On **Friday 5<sup>th</sup> December** we will  
be hosting our Santa Saunter

All children will take part in a  
planned route during school  
time.

Each child should now have a  
sponsorship form. If you haven't  
received one please collect one  
from the office,

The first £500 will go to Barnsley  
Hospital Charity and any other  
amounts raised will go towards  
school resources.

## York Chocolate Factory.



We are holding a trip for our Year 3  
and 4 to visit York Chocolate  
Factory.

**Year 3 - 10<sup>th</sup> December**  
**Year 4 - 11<sup>th</sup> December**

This will be an amazing trip and  
will involve exploring three floors  
filled with interactive exhibitions,  
unwrapping the secrets of making  
delicious chocolate and have the  
chance to observe a chocolate  
making demonstration

**Please consent and make payment  
via Arbor under the trips section**





## Santa's Grotto - KS1

This year we are delighted for the return of  
our **KS1 Santa's Grotto** on  
**Monday 1<sup>st</sup> December**  
**OR**

**Thursday 4<sup>th</sup> December**

Our Santa's Grotto experience will include a  
story from a special visitor, gift, hot chocolate  
and a cookie.

**Thank you to all who have booked.**  
**Booking now closed.**



## Christmas Dinner/ Christmas Jumper Day

On **Friday 12<sup>th</sup> December** it is both our  
Christmas Dinner and Christmas  
Jumper Day!

On this day all children are welcome to  
come into school in their festive  
**Christmas Jumper over their usual  
uniform (school skirt/trousers)**

Please see poster below for dinner  
choice on this day. Please make  
payment on Arbor if you pay for School  
lunches.

**This year instead of money donations  
we are accepting Chocolate Selection  
box donations for Barnsley's  
Children's A&E and Children's ward.**



## Christmas Music Celebration

This year our Christmas  
Music Celebration is on  
**Monday 15<sup>th</sup> December**  
from **3.30pm**  
in the School Hall.

This is an opportunity to  
listen to some of our talented  
pupils whilst browsing your  
child's homemade Christmas  
bauble.



A festive poster for a Christmas meal. The background is white with a border of colorful Christmas lights (red, green, blue, yellow) and green dashed lines. At the top left, an elf in a green and red striped hat and tunic holds a red sack and a yellow bell. At the top right, another elf holds a red sack next to a snowman. On the right side, an elf in a green and white tunic is jumping. On the left side, an elf in a green and red striped hat is on a skateboard. At the bottom, Santa Claus in a red suit and hat is in the center, flanked by two reindeer and two small Christmas trees. The text is in a green, cursive font.

# *Festive Feast*

*12<sup>th</sup> December 2025*

*Roast turkey  
and Chipolata sausage*

*or*

*Quorn Sausages*

*all served with  
stuffing, seasonal vegetables,  
roast and mash potatoes*

*Seasonal desserts*

*Christmas biscuits*



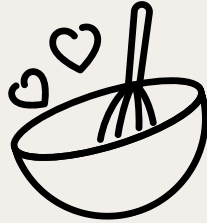


## AFTER SCHOOL CLUBS:

Clubs for next term start W/C  
03.11.25. The last week of  
clubs will be 08.12.25

### Monday

- Cooking Club- Year 5 & 6
- Multi Skills Club- Year 1 & 2
- Drama Club- Year 3 - 6
- Makaton Club- Year 3 & 4
- Lunchtime Keyboard Club - KS2



### Tuesday

- Running Club- Year 1 - 6
- Dodgeball Club- Year 3 - 6
- Chess Club- Year 2 - 6
- Art Club- Year 1 & 2



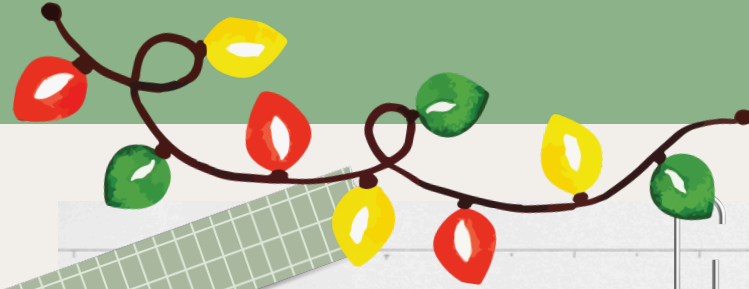
### Wednesday

- Young Voices Choir (Lunchtime)
- Grassroots Gymnastics- Year 1 & 2



### Thursday

- Arts & Crafts Club- FS2 (Class 1 & 2)
- Online Games Club- Year 1 - 2
- Lunchtime Guitar Club -Year 5 and 6



## Autumn 2 Clubs

There are no clubs on the  
following date;

Wednesday 12<sup>th</sup> November  
Thursday 13<sup>th</sup> November  
Monday 1<sup>st</sup> December  
Thursday 4<sup>th</sup> December

These dates are not included  
in the block booking

## COMMUNICATION

Please could you  
move your most  
recent email  
from the junk  
mail box to your  
inbox



## Our Values

- Kind
- Resilient
- Independent
- Respectful
- Honest
- Safe
- Happy
- Teamwork



# MAPPLEWELL HOUSE POINTS



Pupils work as a team in their house  
to earn the most Mapplewell points  
The house with the most points  
by the end of the term  
will earn a reward as a house  
Below is points so far this term....

Cannon Hall House: 3526pts

Locke Park House: 3314pts

Metrodome House: 3468pts

Oakwell House: 3290pts





# Key Dates

## Dec 2025

**Monday 1<sup>st</sup> OR Thursday 4<sup>th</sup> December**  
**KS1 Santa's Grotto**  
Booking now closed

**Thursday 4<sup>th</sup> December**  
**EYFS Santa Visit in school**

**Friday 5<sup>th</sup> December**  
**Santa Saunter**  
Sponsorship forms distributed

**Monday 8<sup>th</sup> December**  
**Reception Nativity**  
9:30am or 2:00pm  
Booking available on Arbor Shop

**Tuesday 9<sup>th</sup> December**  
**KS1 Nativity**  
9:30am or 2:00pm  
Booking available on Arbor Shop

**Thursday 11<sup>th</sup> December**  
**Nursery Sing-a-long**  
11:00am Morning Nursery

**Friday 12<sup>th</sup> December**  
**Christmas Jumper Day/Christmas Dinner Day**  
Accepting selection box donations for  
Barnsley Hospital

**Monday 15<sup>th</sup> December**  
**Christmas Music Celebration**  
3:30pm in the School Hall

**Tuesday 16<sup>th</sup> December**  
**Class 1 and Class 2 - Christmas Crafts**  
More information to follow



## Inset Days 2025/2026

Monday 5<sup>th</sup> January

Friday 19<sup>th</sup> June

Monday 20<sup>th</sup> July



## SCHOOL HOLIDAYS 2025/2026

### SCHOOL HOLIDAYS

MON 22<sup>ND</sup> DEC- FRI 2<sup>ND</sup> JAN

MON 16<sup>TH</sup> FEB-FRI 20<sup>TH</sup> FEB (UPDATED)

MON 30<sup>TH</sup> MARCH- FRI 10<sup>TH</sup> APRIL

MON 25<sup>TH</sup> MAY- FRI 29<sup>TH</sup> MAY

TUES 21<sup>ST</sup> JULY- MON 31<sup>ST</sup> AUG

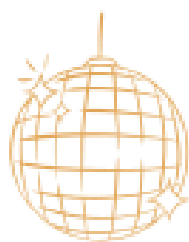
### BANK HOLIDAYS

MON 4<sup>TH</sup> MAY





# Christmas Party Days



Children on their Christmas party day can come to school in their party clothes

## **Nursery and Reception Class**

Monday 15<sup>th</sup> December

## **Year 1 and Year 2**

Tuesday 16<sup>th</sup> December

## **Year 3 and Year 4**

Wednesday 17<sup>th</sup> December

## **Year 5 and Year 6**

Thursday 18<sup>th</sup> December