

# Weekly Bulletin



W/E 17/05/2024

Summer 2023/2024

## Summer Fair

As we gear up for our upcoming Summer Fair, we're reaching out to kindly ask for your support. Two of our featured attractions are the "Bring a Bottle" and "Cup Tombola". We would greatly appreciate any donations you can provide. Starting the week of June 3rd, we'll be sending home cups for you to fill with sweets and treats, adding to the excitement of the event.

But that's not all! We're thrilled to announce the addition of new stalls this year, all dedicated to raising funds for two incredible causes: Sheffield Children's Hospital and Barnsley Hospice. Led by our dedicated pupils, these stalls will offer a variety of handcrafted gifts for you to browse and purchase, with all proceeds going directly to support these vital institutions.

We're eagerly looking forward to welcoming you all to the fair and creating unforgettable memories together.

### SCHOOL ATTENDANCE

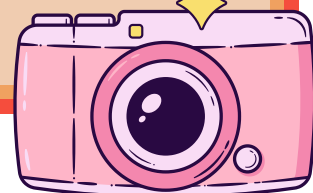
Class 1	95.43%
Class 2	96.52%
Class 3	96.67%
Class 4	97.33%
Class 5	93.85%
Class 6	92.33%
Class 7	94.07%
Class 8	96.67%
Class 9	95.56%
Class 10	98.52%
Class 11	98%

**WHOLE SCHOOL: 94.84%**



### Class Photographs

A polite reminder that class photographs will take place through the day on Wednesday 22nd May. Also, there will be the opportunity for siblings outside of school to have their photograph taken with their sibling at our school. Please contact the office if you would like your child to participate in the sibling photographs at the end of the school day.



$2 \times 2 =$



## Y4 parents, a reminder of the dates and times of the Multiplication check below:

The multiplication tables check (MTC) is statutory for all year 4 pupils registered at state-funded maintained schools, special schools or academies, including free schools, in England.

The purpose of the MTC is to determine whether pupils can recall their times tables fluently, which is essential for future success in mathematics. It will help schools to identify pupils who have not yet mastered their times tables, so that additional support can be provided.

In 2024, schools must administer the MTC to all eligible year 4 pupils between Monday 3 June and Friday 14 June

As a school we are now doing weekly 'try it out' tests to familiarise pupils with how the test will run and the format. We will be continuing to use TTROCKSTARS alongside these tests. If you have any questions then please do not hesitate to ask your class teacher.

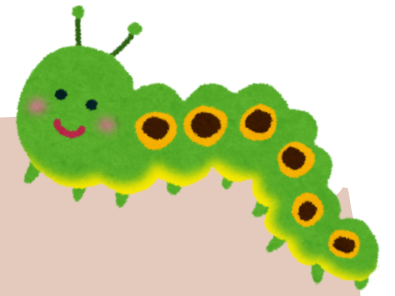
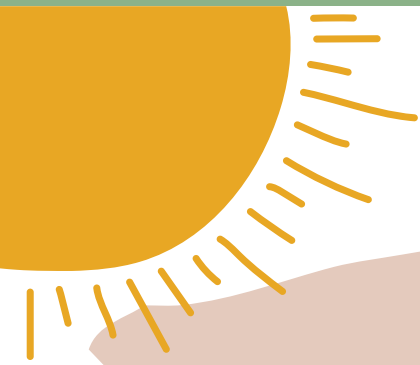
We would like Year 4's to practice their times tables for at least 5 minutes every day.

Further information for parents can be found using the QR code below ...

### KS1 SATs

In preparation for the KS1 SATs (assessments) that take place throughout May, please ensure your child gets a good night's sleep, as adequate sleep is crucial for your child's well-being and cognitive function. Establishing a consistent bedtime routine can greatly support this. Please also encourage your child to have a nutritious breakfast as this will fuel their body and mind for the day ahead.





## Walk To School Week

Next week is Walk to school week – the theme is **THE MAGIC OF WALKING.**

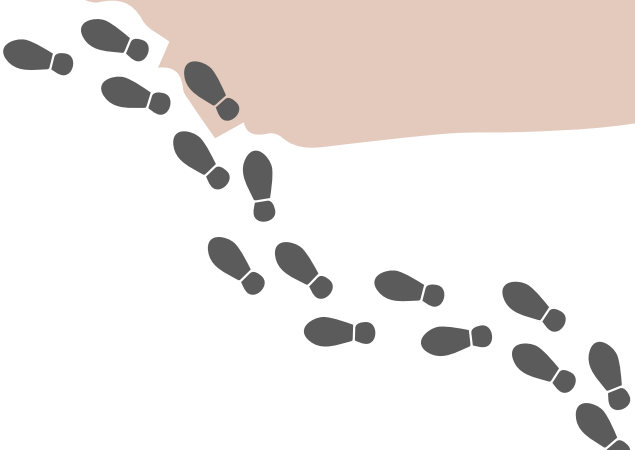
As we are only at school 3 days, we would like for you to complete the 3-day challenge.

Emails via Arbor will be sent with activities you can do with your children. If you would like a paper copy to complete with your child, please visit the school office.

Tag us in your walking photos on twitter. We look forward to seeing your adventures to school.

Happy Walking!

Walk to School Badges for April will be distributed once they arrive in school. Thank you for your patience.



LET'S WALK TO SCHOOL



GET READY FOR...

**WALK TO SCHOOL WEEK**

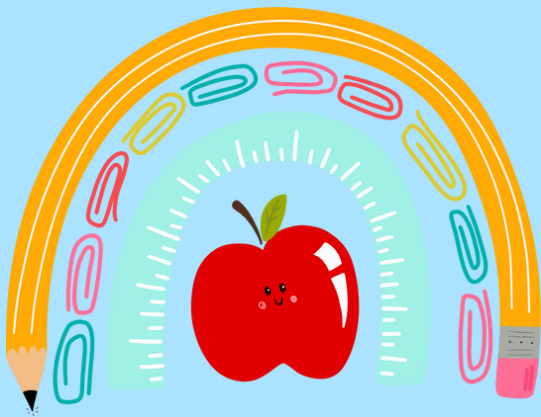
**20-24 May 2024**





## New to Reception/FS2 Workshop

We are all excited in Early Years to welcome new children into Reception Class. The New to Reception Parent Workshop is your chance to find out about the Reception Class/FS2 Curriculum, routines, expectations and other general information. We look forward to meeting you.



## New to Year 1 Workshop

To ensure a smooth transition from EYFS to Year 1 we will be holding a parent workshop on Tuesday 11th June. In this workshop parents will be given further information about the routines and expectations of Key Stage 1 and how the school day will run as a Year 1 child. We will also be providing booklets for families to take home and share with your child, including key information and photographs to help familiarise themselves with the new environment. Please book your space on Arbor.

Follow us...



on Twitter for news & updates

- Whole School - @MapplewellSch
- Nursery - @MPS\_Nursery
- Reception Class 1 & 2 - @MapplewellPSRec
- Class 3 - @MPSClass3
- Class 4 - @MPSClass4
- Class 5 - @MPSClass5
- Class 6 - @MPSClass6
- Class 7 - @MPSClass7
- Class 8 - @MPSClass8
- Class 9 - @MPSClass9
- Class 10 - @MPSClass10
- Class 11 - @MPSClass11



### Our Values

- Kind
- Resilient
- Independent
- Respectful
- Honest
- Safe
- Happy
- Teamwork







## INSET/BANK HOLIDAYS 2023/2024

### INSET DAYS

**Thurs 23rd May**

**Fri 24th May**

**Fri 5th July**

**Mon 22nd July**



### BANK HOLIDAYS

**Mon 6th May**



## SCHOOL HOLIDAYS

### HALF TERM



**Mon 25th March- Fri 5th April**

**Mon 27th May - Fri 31st May**



## School Meals

**We would like to remind parents to regularly top up school meals accounts to ensure that they do not go into arrears. Payments can be made via Arbor or by calling the school office to make a card payment over the phone.**

# KEY DATES



## May

Monday 20th May  
HCAT TTRS

Wednesday 22nd May  
School Class Photographs

## June

W/C 3rd June  
Year 4 MTC Check

Tuesday 11th June  
Tourette's Awareness Day

Tuesday 18th June  
Sundown Adventureland - Class 2

Wednesday 19th June  
Enterprise Final Day

Thursday 20th  
Sundown Adventureland - Class 1

Friday 21st June  
Pride Awareness Day

Friday 28th June  
Brass Band Performance

W/C 24th June  
Year 1 Phonics Screening Check

Tuesday 27th June  
Music Festival

## July

Tuesday 2nd July  
KS1 Sports Day

Wednesday 3rd July  
KS2 Sports Day

Thursday 4th July  
Summer Fair

Friday 5th July  
Inset Day

Tuesday 9th July  
Parent/ Carer Thank you  
Coffee And Cake

Tuesday 9th July  
HCAT athletics competition

Wednesday 10th July  
Barnsley Big Sing

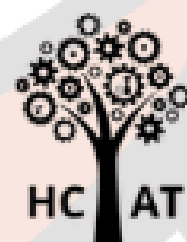
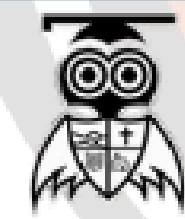
Thursday 11 July  
Year 6 Performance

Friday 12th July  
Year 6 Soar Trip and leavers assembly

Wednesday 10th July  
Art Gallery

Monday 22nd July  
INSET





# TIMES TABLES TIGERS

MONDAY 20TH MAY  
9.30AM - 2.45PM

#HCATROCKS

COME TO SCHOOL DRESSED AS YOUR  
FAVOURITE POP/ROCKSTAR

EARN POINTS BY PLAYING ON TTRS  
THROUGHOUT THE DAY

PRIZES FOR THE BEST DRESSED,  
TOP SCORING PLAYERS AND THE  
HIGHEST SCORING  
CLASSES/SCHOOL

**WHICH SCHOOL  
WILL WIN?**

