

Weekly Bulletin

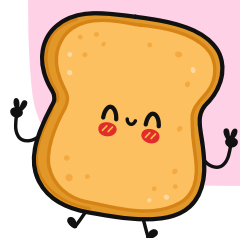


W/E 10/05/2024

Summer 2023/2024

KS2 SATs Week

KS2 SATs are taking place Monday 13th - Thursday 16th May 2024. On these days we will be offering a free breakfast club for Year 6 children so they can be in a relaxing environment with their peers, this will consist of toast and fruit juice. This is from 8am and children will be able to enter through the conservatory door.



KS1 SATs

In preparation for the KS1 SATs (assessments) that take place throughout May, please ensure your child gets a good night's sleep, as adequate sleep is crucial for your child's well-being and cognitive function. Establishing a consistent bedtime routine can greatly support this. Please also encourage your child to have a nutritious breakfast as this will fuel their body and mind for the day ahead.



New to Year 1 Workshop

To ensure a smooth transition from EYFS to Year 1 we will be holding a parent workshop on Tuesday 11th June. In this workshop parents will be given further information about the routines and expectations of Key Stage 1 and how the school day will run as a Year 1 child. We will also be providing booklets for families to take home and share with your child, including key information and photographs to help familiarise themselves with the new environment. Please book your space on Arbor.



SCHOOL ATTENDANCE

Class 1	93.75%
Class 2	95.65%
Class 3	98.33%
Class 4	89.17%
Class 5	96.77%
Class 6	93.75%
Class 7	93.06%
Class 8	94.44%
Class 9	87.96%
Class 10	94.44%
Class 11	97.62%
WHOLE SCHOOL:	92.94%



$2 \times 2 =$



Y4 parents, a reminder of the dates and times of the Multiplication check below:

The multiplication tables check (MTC) is statutory for all year 4 pupils registered at state-funded maintained schools, special schools or academies, including free schools, in England.

The purpose of the MTC is to determine whether pupils can recall their times tables fluently, which is essential for future success in mathematics. It will help schools to identify pupils who have not yet mastered their times tables, so that additional support can be provided.

In 2024, schools must administer the MTC to all eligible year 4 pupils between Monday 3 June and Friday 14 June

As a school we are now doing weekly 'try it out' tests to familiarise pupils with how the test will run and the format. We will be continuing to use TTROCKSTARS alongside these tests. If you have any questions then please do not hesitate to ask your class teacher.

Further information for parents can be found using the QR code below ...



Class Photographs

A polite reminder that class photographs will take place through the day on Wednesday 22nd May. Also, there will be the opportunity for siblings outside of school to have their photograph taken with their sibling at our school. Please contact the office if you would like your child to participate in the siblings photographs at the end of the school day.





Tourette Syndrome Awareness Month

May 15 to June 15

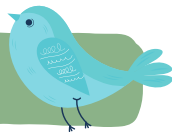


StopTicsToday.org

Tourette Awareness Month

Tourette Awareness Month is observed every year from May 15 to June 15. During this month, efforts are made to destigmatize Tourette Syndrome, dispel myths, and raise understanding and acceptance for TS and Tic Disorders. To support our pupils understand Tourettes Syndrome is, Miss Clayton will deliver a whole school assembly to help raise awareness.

Follow us...



on Twitter for news & updates

- Whole School - @MapplewellSch
- Nursery - @MPS_Nursery
- Reception Class 1 & 2 - @MapplewellPSRec
- Class 3 - @MPSClass3
- Class 4 - @MPSClass4
- Class 5 - @MPSClass5
- Class 6 - @MPSClass6
- Class 7 - @MPSClass7
- Class 8 - @MPSClass8
- Class 9 - @MPSClass9
- Class 10 - @MPSClass10
- Class 11 - @MPSClass11



Uniform Swap Shop

A polite reminder that we have a uniform swap shop in our school reception. You can bring in any good condition and clean preloved uniform. This uniform is available to everyone and you can call into reception at any point in the school day. Thank you to those who have already donated uniform. Extending the lifespan of clothes by just three months could result in a 5-10% reduction in carbon, water, and waste footprints.



Our Values

- Kind
- Resilient
- Independent
- Respectful
- Honest
- Safe
- Happy
- Teamwork





INSET/BANK HOLIDAYS 2023/2024

INSET DAYS

Thurs 23rd May

Fri 24th May

Fri 5th July

Mon 22nd July



BANK HOLIDAYS

Mon 6th May



SCHOOL HOLIDAYS

HALF TERM



Mon 25th March- Fri 5th April

Mon 27th May - Fri 31st May

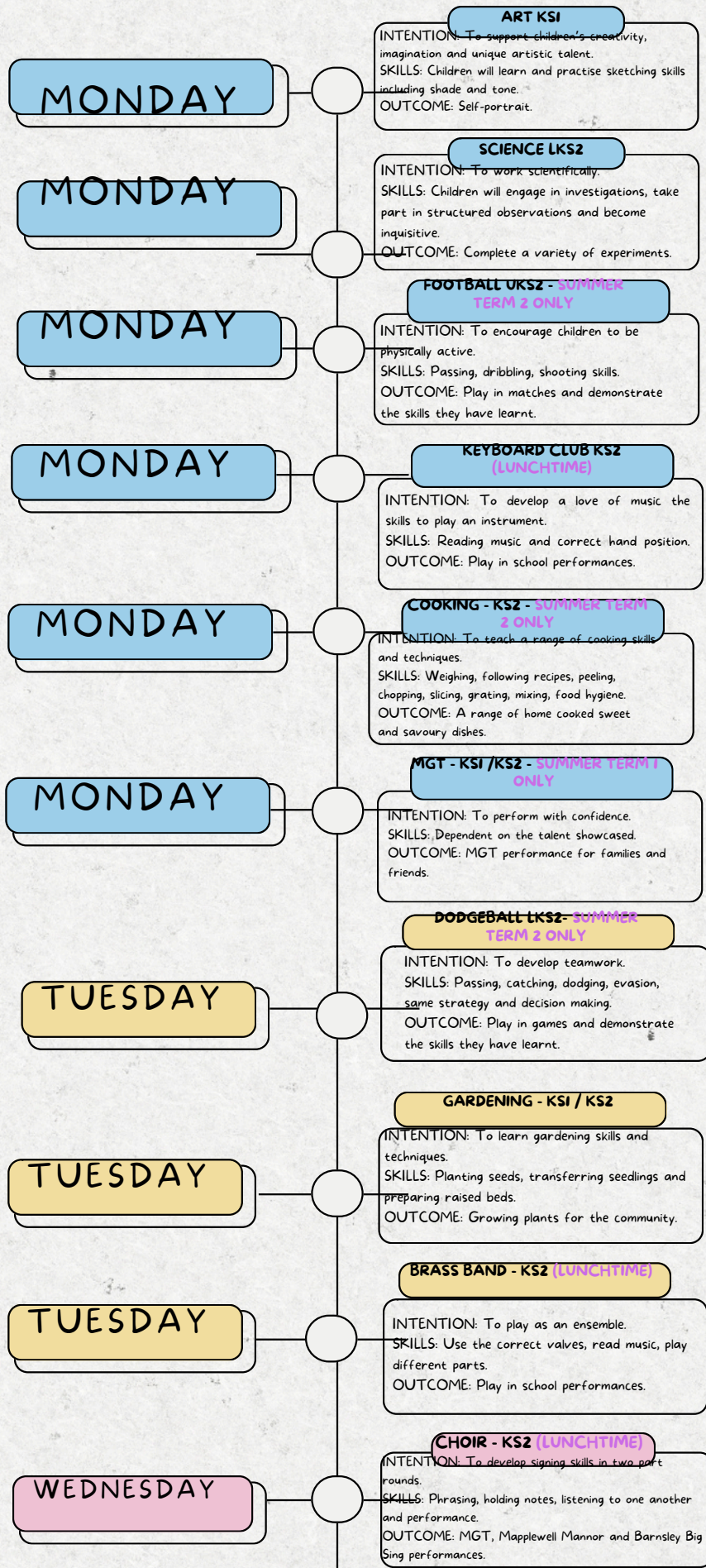


School Meals

We would like to remind parents to regularly top up school meals accounts to ensure that they do not go into arrears. Payments can be made via Arbor or by calling the school office to make a card payment over the phone.

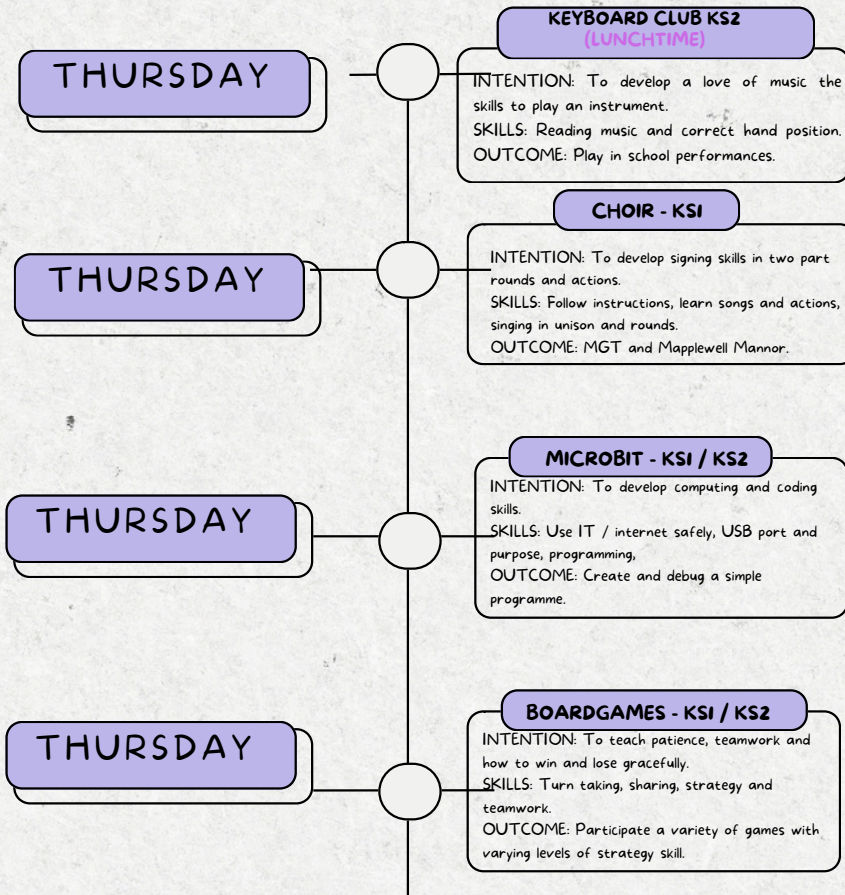
AFTER SCHOOL CLUBS

Summer Term 2024



AFTER SCHOOL CLUBS

Summer Term 2024



KEY DATES



May

W/C 13th May
KS2 SATS

Monday 20th May
HCAT TTRS

Wednesday 22nd May
School Class Photographs

June

W/C 3rd June
Year 4 MTC Check

Tuesday 11th June
Tourette's Awareness Day

Tuesday 18th June
Sundown Adventureland - Class 2

Wednesday 19th June
Enterprise Final Day

Thursday 20th
Sundown Adventureland - Class 1

Friday 21st June
Pride Awareness Day

Friday 28th June
Brass Band Performance

W/C 24th June
Year 1 Phonics Screening Check

Tuesday 27th June
Music Festival

July

Tuesday 2nd July
KS1 Sports Day

Wednesday 3rd July
KS2 Sports Day

Thursday 4th July
Summer Fair

Friday 5th July
Inset Day

Tuesday 9th July
Parent/ Carer Thank you
Coffee And Cake

Tuesday 9th July
HCAT athletics competition

Wednesday 10th July
Barnsley Big Sing

Thursday 11 July
Year 6 Performance

Friday 12th July
Year 6 Soar Trip and leavers assembly

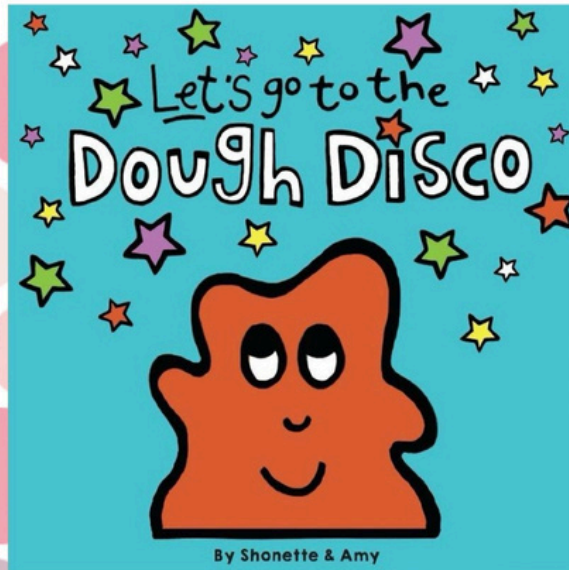
Wednesday 10th July
Art Gallery

Monday 22nd July
INSET



We would like to invite Nursery
parents / carers into nursery to see
our Dough Disco Show!

Friday
17th May



Am session: 11am

Pm session: 3pm

Please book via Arbor.

YSP

£3 after 3pm

Enjoy late afternoon adventures with
all the family. Play, spy art outdoors
and tuck into the Little Wild Wood
menu in The Kitchen Café.

Find out more at ysp.org.uk

Adult entry just
£3 after 3pm
Kids go FREE





MAPPLEWELL COMMUNICATIONS KS1 & KS2



ARBOR

Arbor is our chosen method to communicate with parents. Wherever possible please download the app. All Teachers and office members have access to the email function to share important messages. The school bulletin is always sent out every Friday via Arbor and is on the school website for your convenience.

Please always check your junk folder.



Arbor



SEESAW

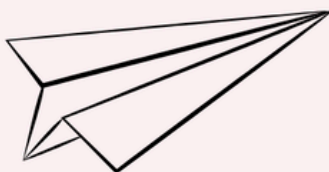
Seesaw is used by Class Teachers for sharing home learning. Spellings and home learning tasks will be visible here as well as school work where seesaw has been used. The school office and class teachers do not use seesaw to communicate.

TWITTER / X

Twitter or X is where we celebrate all the amazing things that go on at Mapplewell Primary School. Each Class has their own twitter page which will send a tweet a day! Follow us @MapplewellSch



PAPER



Wherever possible we will endeavour not to send paper home and be mindful of the environment. However, some permission slips and application forms must be sent via paper copies.





MAPPLEWELL COMMUNICATIONS EYFS



ARBOR

Arbor is our chosen method to communicate with parents. Wherever possible please download the app. All Teachers and office members have access to the email function to share important messages. The school bulletin is always sent out every Friday via Arbor and is on the school website for your convenience.

Please always check your junk folder.



SEESAW



The EYFS team will use seesaw messenger to keep parents updated daily.

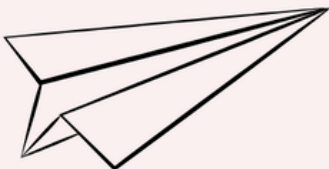
Please be mindful that as your child moves in to KS1 that seesaw will become a home learning tool and all communications with teachers will be via Arbor.

TWITTER / X

Twitter or X is where we celebrate all the amazing things that go on at Mapplewell Primary School. Each Class has their own twitter page which will send a tweet a day! Follow us @MapplewellSch



PAPER



Wherever possible we will endeavour not to send paper home and be mindful of the environment. However, some permission slips and application forms must be sent via paper copies.

