

Weekly Bulletin



W/E 12/04/2024

Spring 2023/2024

WOW - The Walk To School Challenge

At Mapplewell Primary School we want to encourage our pupils to think about the benefits of walking to school.

We have partnered up with WOW Walk to School Challenge where pupils will earn a badge each month if they walk to school at least 1 day each week.

This can include walking, park and stride, scooting, cycling.

Reasons to walk to school include:

Healthier Bodies, Happier Minds.

Fewer Cars at the School Gates.

Walking = Less Pollution.

Walking = Fun with Friends and Family.

We cannot wait to start after the Easter Holidays!

(See additional email with further information on Park and Stride and Family Information Kit.)

SCHOOL ATTENDANCE

Class 1	100%
Class 2	98.86%
Class 3	96.67%
Class 4	100%
Class 5	98.39%
Class 6	99.55%
Class 7	98.15%
Class 8	97.22%
Class 9	100%
Class 10	98.14%
Class 11	99.17%

WHOLE SCHOOL: 94.99%

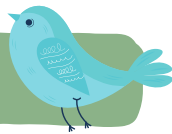




Year 3 and 4 have had a fantastic time on their Trips to Whitby Abbey. They have really enjoyed exploring Whitby and having a tour of the Abbey from one of the guides!



Follow us...



on Twitter for news & updates

- Whole School - @MapplewellSch
- Nursery - @MPS_Nursery
- Reception Class 1 & 2 - @MapplewellPSRec
- Class 3 - @MPSClass3
- Class 4 - @MPSClass4
- Class 5 - @MPSClass5
- Class 6 - @MPSClass6
- Class 7 - @MPSClass7
- Class 8 - @MPSClass8
- Class 9 - @MPSClass9
- Class 10 - @MPSClass10
- Class 11 - @MPSClass11



Our Values

- Kind
- Resilient
- Independent
- Respectful
- Honest
- Safe
- Happy
- Teamwork





INSET/BANK HOLIDAYS 2023/2024

INSET DAYS

Thurs 23rd May

Fri 24th May

Fri 5th July

Mon 22nd July



BANK HOLIDAYS

Mon 6th May



SCHOOL HOLIDAYS

HALF TERM

Mon 25th March- Fri 5th April

Mon 27th May - Fri 31st May



It is the Year 1 and 2 trips to Yorkshire Wildlife Park next week. Please make payment through Arbor if you have not already.

- Tuesday 16th April - Year 1
- Wednesday 17th April - Year 2

KEY DATES



April

Tuesday 16th April
Year 1 Yorkshire Wildlife Trip

Wednesday 17th April
Year 2 Yorkshire Wildlife Trip

Monday 15th April
Parents Evening

Thursday 18th April
Parents Evening

Monday 22nd April
Earth Day

Monday 29th April
Mapplewells Got Talent

May

W/C 7th May
KS1 SATS

W/C 13th May
KS2 SATS

Monday 20th May
HCAT TTRS

Wednesday 22nd May
School Photographs

June

W/C 3rd June
Year 4 MTC Check

Tuesday 11th June
Tourette's Awareness Day

Tuesday 18th June
Sundown Adventureland - Class 1

Wednesday 19th June
Enterprise Final Day

Thursday 20th
Sundown Adventureland - Class 2

Friday 21st June
Pride Awareness Day

Friday 28th June
Brass Band Performance

W/C 24th June
Year 1 Phonics Screening Check

Tuesday 27th June
Music Festival

July

Tuesday 2nd July
KS1 Sports Day

Wednesday 3rd July
KS2 Sports Day

Thursday 4th July
Summer Fair

Friday 5th July
Inset Day

Tuesday 9th July
Parent/ Carer Thank you
Coffee And Cake

Tuesday 9th July
HCAT athletics competition

Wednesday 10th July
Barnsley Big Sing

Thursday 11 July
Year 6 Performance

Friday 12th July
Year 6 Soar Trip and leavers assembly

Wednesday 10th July
Art Gallery

Monday 22nd July
INSET

In this package
there will be 1
bracelets two mini
claw clips 2
mini bows and 1
sweet!!

Rise and shine accesories

Dates

We will be selling them on wendensday
thursday and friday!

They will be two pound each and hope you
enjoy our ver hard worked on business



Thank you... 

We are pleased to announce the upcoming business 'Rise and Shine'. This has been established by a group of Y5 pupils who are hoping to raise money for Sheffield's Children's Hospital.

The group of children have worked hard on planning the business, including calculating budgets and profits margins.

They are passionate about supporting others and would appreciate your support. The stall will be open Wednesday, Thursday and Friday at lunchtime and after school.

Barnsley Football Development



At Barnsley Academy (Grass Pitch)
Farm Road, Barnsley, S70 3DL
Starting on Monday 13th May 2024

In association with First Kick Football

School years - Reception and Year 1	6:00pm - 6:45pm
School years - Year 2 and Year 3	6:45pm - 7:30pm
School years - Year 4, Year 5 & Year 6	7:30pm - 8:30pm

Dear parents,

Places are now available to join a new **12-week football course every Monday at Barnsley Academy, starting 13th May**, which is open to both boys and girls.

Our courses teach children correct football techniques by FA qualified coaches who have full DBS (CRB) clearance to work with children. The structure for the course is 'FUN through Football,' building confidence for total beginners and moving onto more complex sessions for experienced players.

We provide a **ball per player** for the majority of our drills ensuring children get more touches of the ball and improve quicker than conventional coaching where children are waiting around to have a turn. The sessions are held on the fantastic grass pitch so boots should be worn. Players are also advised to bring a still drink for the session.

The club has links to local junior teams of which players will be able to play for at the weekend. Players who show advanced ability on the course will be recommended for trials at professional academies. Players who have previously attended courses are currently playing for Sheffield United, Sheffield Wednesday, Manchester United, Liverpool, Nottingham Forest, Derby County, Doncaster and Rotherham.

The cost of the course is just £6.25 per week, which is payable in two instalments. The first payment of £25 is due when booking your child on and the second payment of £50 due at the first session. Parents are encouraged to watch the sessions but are welcome to leave children, as every session is fully supervised.

****NEW TOURNAMENT FORMAT****

Every four weeks we have a tournament in order for the children to put their new-found skills into practice with medals and trophies awarded at the end of the course for various categories.

ALL PLAYERS WILL RECEIVE A TROPHY & A MEDAL at the presentation, which is held on the final week of the course. Additional trophies will also be awarded in each group from categories including; Best Attitude, Star Player, Most Improved Player, Most Promising Player and Hardest Working Player.

To book a place for your child please telephone the number below as soon as possible as a high response is expected.



Lewis

**TO BOOK PLEASE TELEPHONE
0114 698 2794 or 07514 316 534**



We cannot guarantee that the course will run in consecutive weeks.
Please note we have a strict no refund policy once the course has been booked.

NURSERY FRIDAY LIBRARY

To help promote reading at home, every Friday Nursery will open their doors 10 minutes early to invite parents/ carers into nursery to help their child choose a book that they can enjoy over the weekend. There is also a library for the grownups, grandparents included so don't be scared to help yourself.

If you have any old books lying around, please feel free to bring them in and swap them for a new book.

Morning
Nursery
The door will
open at
11:30am

Afternoon
Nursery
The door will
open at 3:15pm

