

# Weekly Bulletin



W/E 22/03/2024

Spring 2023/2024

## Juvenile Arthritis

### Awareness Day.

Thank you for your kind donations, we managed to raise £112.55!!



## **SCHOOL ATTENDANCE**

Class 1 98.18%  
Class 2 90.45%  
Class 3 97.33%  
Class 4 93.33%  
Class 5 96.45%  
Class 6 96.55%  
Class 7 89.26%  
Class 8 98.52%  
Class 9 97.04%  
Class 10 95.19%  
Class 11 97%

**WHOLE SCHOOL: 94.99%**



## Read Holmfirth



Wednesday 10th April

Rhian Trace - I, Spy and Hide and Seek - Class 9, 10 and 11

Available to buy through Arbor from Wednesday 10th April.

One book for £6.50 or two books for £12.00

Tuesday 23rd April

John Kane - What is black and white? - Classes 1, 2, 3, 4 and 5

Available to buy through Arbor for £6.50 from Tuesday 23rd April.



## Parents' Evenings

We will be holding our parents evenings' on the dates below:

Monday 15th April 2024

and

Thursday 18th April 2024

3.30PM - 5.50PM

Please book your place via Arbor





# WOW - The Walk To School Challenge

At Mapplewell Primary School we want to encourage our pupils to think about the benefits of walking to school.

We have partnered up with WOW Walk to School Challenge where pupils will earn a badge each month if they walk to school at least 1 day each week.

This can include walking, park and stride, scooting, cycling.

Reasons to walk to school include:

Healthier Bodies, Happier Minds.

Fewer Cars at the School Gates.

Walking = Less Pollution.

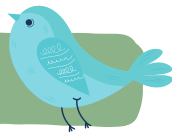
Walking = Fun with Friends and Family.

We cannot wait to start after the Easter Holidays!

(See additional email with further information on Park and Stride and Family Information Kit.)



Follow us...



on Twitter for news & updates



- Whole School - @MapplewellSch
- Nursery - @MPS\_Nursery
- Reception Class 1 & 2 - @MapplewellPSRec
- Class 3 - @MPSClass3
- Class 4 - @MPSClass4
- Class 5 - @MPSClass5
- Class 6 - @MPSClass6
- Class 7 - @MPSClass7
- Class 8 - @MPSClass8
- Class 9 - @MPSClass9
- Class 10 - @MPSClass10
- Class 11 - @MPSClass11



## Our Values

- Kind
- Resilient
- Independent
- Respectful
- Honest
- Safe
- Happy
- Teamwork







## INSET/BANK HOLIDAYS 2023/2024

### INSET DAYS

Mon 8th April



Thurs 23rd May

Fri 24th May

Fri 5th July

Mon 22nd July

### BANK HOLIDAYS

Mon 6th May



## SCHOOL HOLIDAYS

### HALF TERM



Mon 25th March- Fri 5th April

Mon 27th May - Fri 31st May



As we are coming up towards the end of term please don't forget to check Arbor for any outstanding payments.



# EXTRA-CURRICULAR CLUBS:

## Monday

Film Club - All years

Maths - UKS2

SATS Booster sessions -  
Year 6

Art - KS2

Keyboard Club (Lunch)  
KS2

Photography Club - UKS2

## Tuesday

Band - Lunch - KS2

## Wednesday

Choir / Young Voices  
(Lunch)- KS2

## Thursday

Micro:Bit - KS2

Board Games - All Years

Keyboard Club (Lunch) - KS2

Choir - KS1





# KEY DATES



## April

Monday 8th April  
Inset

Tuesday 9th April  
ASD awareness day

Tuesday 9th April  
Year 2 SATs Parents Workshop

Wednesday 10th April  
Year 3 Whitby Abbey Trip

Thursday 11th April  
Year 4 Whitby Abbey Trip

Tuesday 16th April  
Year 1 Yorkshire Wildlife Trip

Wednesday 17th April  
Year 2 Yorkshire Wildlife Trip

Monday 15th April  
Parents Evening

Thursday 18th April  
Parents Evening

Monday 22nd April  
Earth Day

Monday 29th April  
Mapplewells Got Talent

## May

W/C 7th May  
KS1 SATS

W/C 13th May  
KS2 SATS

Wednesday 22nd May  
School Photographs

## June

W/C 3rd June  
Year 4 MTC Check

Tuesday 11th June  
Tourette's Awareness Day

Wednesday 19th June  
Enterprise Final Day

Friday 21st June  
Pride Awareness Day

Friday 28th June  
Brass Band Performance

W/C 24th June  
Year 1 Phonics Screening Check

Tuesday 27th June  
Music Festival

## July

Tuesday 2nd July  
KS1 Sports Day

Wednesday 3rd July  
KS2 Sports Day

Thursday 4th July  
Summer Fair

Friday 5th July  
Inset Day

Tuesday 9th July  
Parent/ Carer Thank you  
Coffee And Cake

Tuesday 9th July  
HCAT athletics competition

Thursday 11th July  
Year 6 Performance

Friday 12th July  
Year 6 Soar Trip and leavers assembly

Wednesday 10th July  
Art Gallery

Monday 22nd July  
INSET



# ***NURSERY FRIDAY LIBRARY***

To help promote reading at home, every Friday Nursery will open their doors 10 minutes early to invite parents/ carers into nursery to help their child choose a book that they can enjoy over the weekend. There is also a library for the grownups, grandparents included so don't be scared to help yourself.

If you have any old books lying around, please feel free to bring them in and swap them for a new book.

Morning  
Nursery  
The door will  
open at  
11:30am

Afternoon  
Nursery  
The door will  
open at 3:15pm





