

Weekly Bulletin



W/E 22.09.23

Autumn 2023/2024



Book Fair! WC 25/09/23

This will be after school and we will be using a cashless system.

- Monday 25th September
EYFS Classes (Nursery, Class 1 and Class 2)
- Tuesday 26th September
KS1 classes (Classes 3, 4 and 5)
- Wednesday 27th September
Year 3 and 4 (Classes 6, 7 and 8)
- Thursday 28th September
Year 5 and 6 (Classes 9, 10 and 11)

SCHOOL ATTENDANCE



Class 1: 98.3%

Class 2: 98.2%

Class 3: 95%

Class 4: 96.3%

Class 5: 95.5%

Class 6: 98.7%

Class 7: 95.9%

Class 8: 96.3%

Class 9: 97.5%

Class 10: 98.5%

Class 11: 93%

WHOLE SCHOOL: 96.38%



Please do not
bring money - we
cannot accept it!

Please do
bring a
device to
scan a QR
code!





AFTER SCHOOL CLUBS WE OFFER:

Monday

Film Club - All years

Maths - UKS2

Football Boys Team - UKS2

Art - KS2

Coding - KS2

Cooking - KS1

Wednesday

Choir / Young Voices - KS2

Tuesday

Athletics - KS2

Band - Lunch - KS2

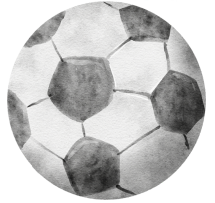


Thursday

Computing - KS2

Reading - KS1

Board Games - All Years



Where do I pick up from?

UKS2 Conservatory doors:

Film club, Art Club, Maths Club,
Athletics

Breakfast Club doors:

Ks2 coding club, Reading Club

Class 3 door:

Cooking club, KS1 computing

Class 4 door:

Board Games Club

Top Field:

Boys football team

After School Clubs

As we want to have as many participants in after school clubs as possible, we are only going to run a club if it has 7 or more participants. Should a club not have 7 pupils signed up, we will offer an alternative club.



Follow us...



on Twitter for news & updates

Whole School - @MapplewellSch
 Nursery - @MPS_Nursery
 Reception Class 1 & 2 - @MapplewellPSRec
 Class 3 - @MPSClass3
 Class 4 - @MPSClass4
 Class 5 - @MPSClass5
 Class 6 - @MPSClass6
 Class 7 - @MPSClass7
 Class 8 - @MPSClass8
 Class 9 - @MPSClass9
 Class 10 - @MPSClass10
 Class 11 - @MPSClass11



Parent Coffee Morning 9AM



We would like to formally invite you to our first Coffee Morning of the academic year on **Friday 6th October**. Sarah Turner from Compass Be will be introducing herself and the partnership we have with them, to promote positive Mental Health throughout school. We look forward to seeing you there. See attached flyer.



Our Values

- Kind
- Resilient
- Independent
- Respectful
- Honest
- Safe
- Happy
- Teamwork





INSET/BANK HOLIDAYS 2023/2024

INSET DAYS

Mon 6th November

Mon 8th April

Thurs 23rd May



Fri 24th May

Fri 5th July

Mon 22nd July

BANK HOLIDAYS

Mon 6th May



SCHOOL HOLIDAYS



HALF TERM

Mon 30th Oct - Fri 3rd Nov

Mon 25th Dec - Fri 5th Jan

Mon 12th Feb - Fri 16th Feb

Mon 25th March- Fri 5th April

Mon 27th May - Fri 31st May



Menus

We have sent out the new Menus for school meals starting from WC 25/09/2023. These menus can also be found on our website.

The menus start on week 1.



KEY DATES



September

Monday 25th September
Reception Reading Challenge
Starts

W/C 25th September
Book Fair in school

Tuesday 26th September
Reception (FS2)
Phonics and Early Reading
Workshop



October

Monday 2nd October
Athlete Visit - Dress in Red or
White

Thursday 5th October
Poetry Day

Tuesday 10th October
World Mental Health Day

Friday 20th October
Harvest Festival

Monday 23rd October
Pumpkin Competition opens

November

Tuesday 7th November
Parents Evening

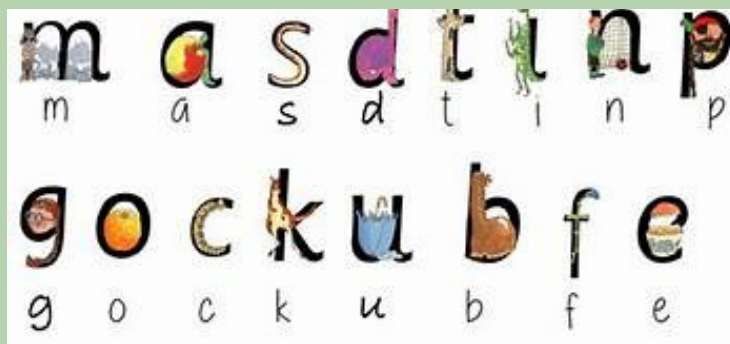
Wednesday 8th November
Parents Evening



RECEPTION CLASS PARENT WORKSHOP



Phonics and Early Reading



**Tuesday 26th September -
4:30pm**

Place - School Hall

An opportunity for you to find out more about our approach to teaching phonics, how you can support your child at home with Early Reading.

Rise and Shine

Year 1
Storybook
share & swap
session

...oor old Fox
...as lost his socks.



Every Thursday
8:30 am
In Classrooms 3 & 4



Hollie's Christmas GIFT APPEAL

In December Hollie will be delivering presents to Sheffield Children's Hospital for the children who are in hospital at Christmas. Having been diagnosed with Juvenile Arthritis and having spent a lot of time at Sheffield Children's Hospital, Hollie is keen to give something back!

Your paragraph text



DONATE NOW

 Laura: 07710 130982



COFFEE MORNING FOR PARENTS/CARERS

Come and meet Sarah from Compass Be, Mental Health Support Team

Join us for a cuppa and we will talk about the work we do with schools and pupils. Find out about the support we can offer to parents and carers of children who may experience anxiety, worries or low mood

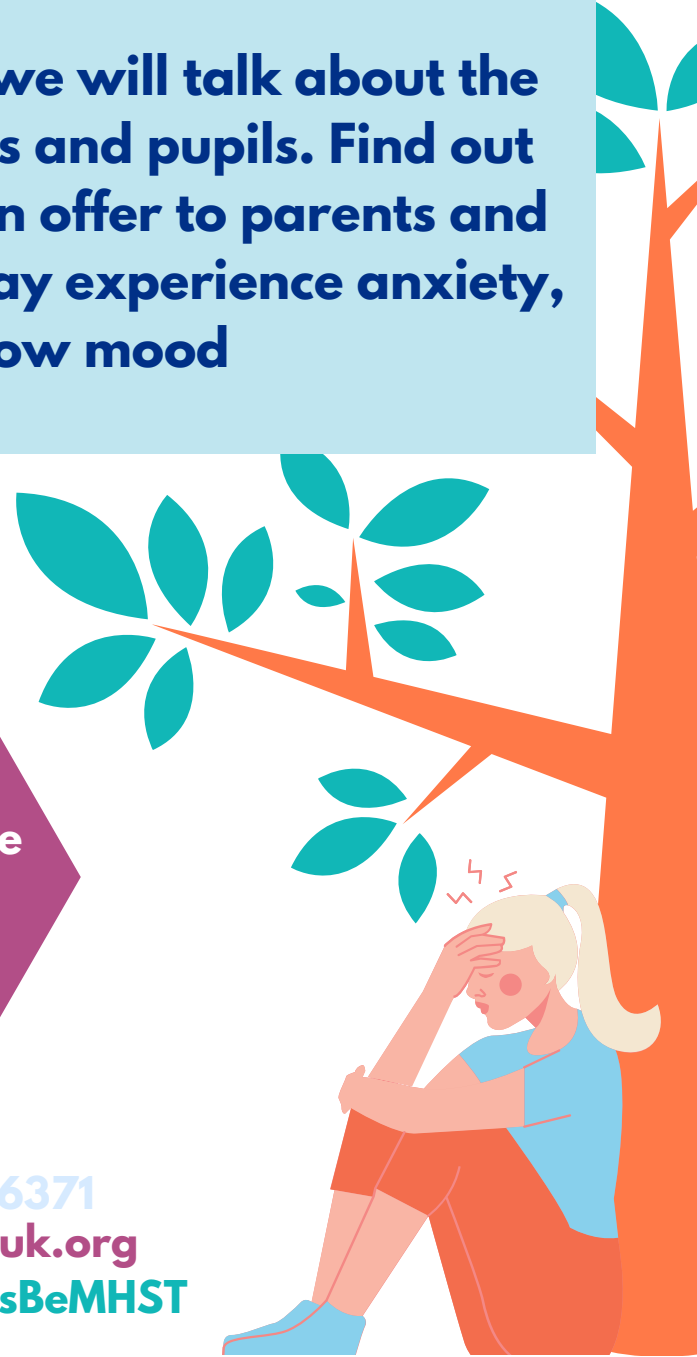


**Mapplewell
Primary School
Greenside Avenue
Mapplewell
Barnsley
S75 6BB**

**Friday
6th October 2023
at 9am**



**01904 666371
compass-uk.org
@compassBeMHST**



FREE BOOKS FOR YOUR SCHOOL WHEN YOU BUY AT THE BOOK FAIR!

COME TO the BOOK FAIR!

A POP-UP BOOK-STORE WITH HUNDREDS OF BOOKS FROM JUST £2.99

LAST YEAR, YOUR SUPPORT HELPED TO DONATE OVER £5.3M BOOKS TO SCHOOLS NATIONWIDE

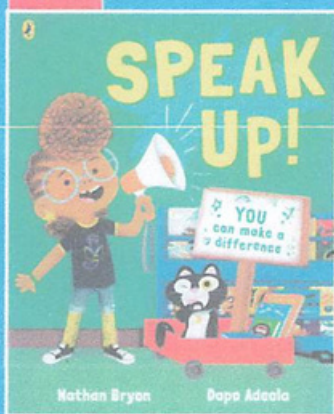
NEW



GREAT DEAL only £2.99

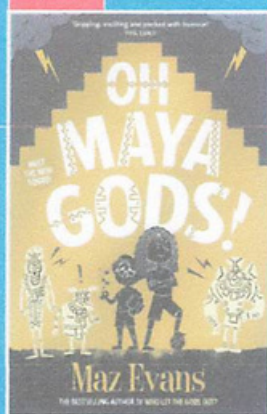
£7.99 **£2.99**

NEW



£7.99

NEW



£7.99

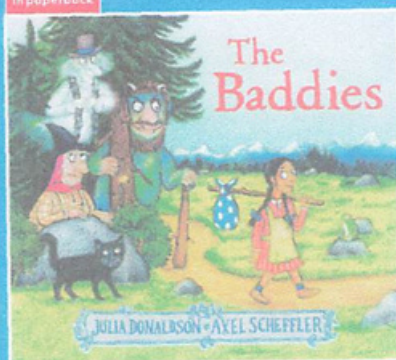
NEW



Hardback only £7.99

£12.99 **£7.99**

NEW In paperback



£7.99

NEW



£6.99

4 Fair books are subject to terms and conditions. Please contact your Book Fair Organiser or Scholastic Book Fairs for details.

Art © Liz Pichon

Date:

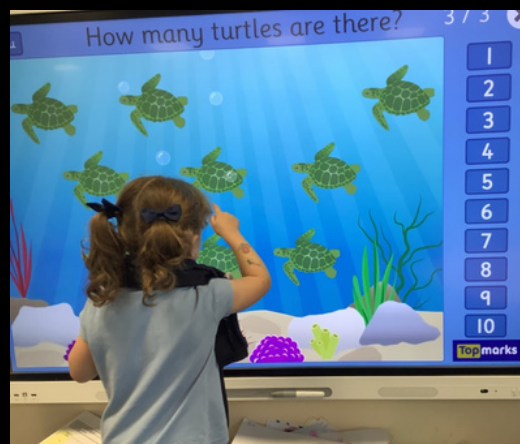
WC: 25/09/23
See bulletin and reading newsletter for more information.

Scan the QR code to pay online!



Nursery Parent Workshop

Our Nursery Curriculum and assessment



TUESDAY 10TH OCTOBER 2023
4:30PM

